

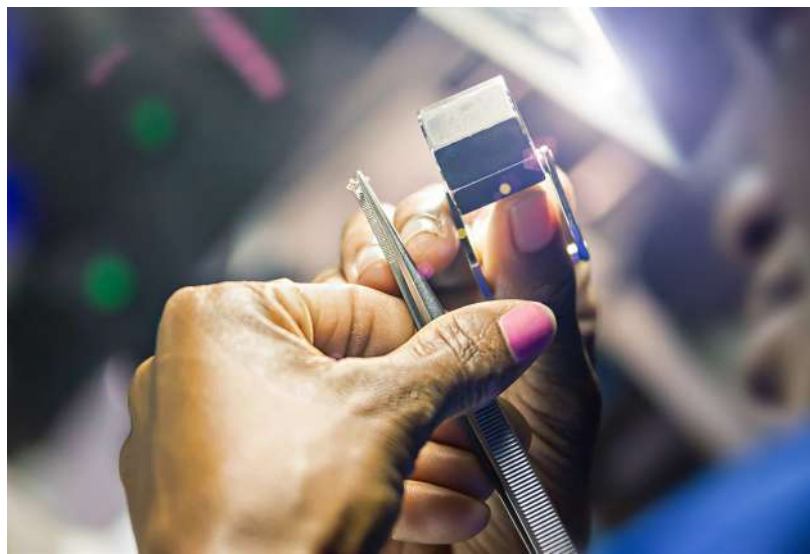


BOTSWANA
INVESTMENT
& TRADE CENTRE



BOTSWANA **EXPORTERS** Catalogue





BOTSWANA EXPORTERS

Catalogue



TABLE OF CONTENTS

Foreword	4
About Botswana	5
Why Botswana	6
Botswana's Unique Selling Points	7
Investment Opportunities	8
Market Access	9
Company Profiles	11
Agriculture & Agro Processing	12
Applied Information & Communications Tech	15
Automotive	17
Education & Skills Development	20
Financial & Business Services	24
Manufacturing	29
Mining	44
Mining Beneficiation	47
Transport & Logistics Cargo	54
About Ministry of Investment, Trade & Industry	57
Parastatals	58
Banking and Other Financial Institutions	59
Manufacturers Listing	60
About BITC	75

FOREWORD



The Botswana Investment and Trade Centre (BITC) continues to energise our country's export growth through the development and promotion of value-added products and services. For our trade to thrive, the first step is to provide relevant, timeous, accurate and up-to-date information to existing and potential buyers of Botswana manufactured goods, on products and services provided by Botswana based companies. The Botswana Exporters Catalogue provides a platform for such information to be disseminated to buyers, investors, exporters and other stakeholders.

In line with the government's thrust to open up the country for trade and investment, the Botswana Exporters Catalogue aims to exhibit the diversity and quality of our locally manufactured goods as well as our trade in services, in order to attract Foreign Direct

Investment and strategic partnerships. We are confident that this will lead to increased demand for Botswana's goods and services globally, and subsequently, a growth in our exports.

BITC working with other stakeholders, continues to encourage existing and potential exporters and importers to fully utilize the **GoBotswana, BrandBotswana, Global Expo Botswana and Botswana Trade Portal** online platforms for all their trade information requirements as well as any form of facilitation they may require from time to time. These interactive websites provide the much needed up to date and relevant market intelligence, access to market analysis tools, trade agreements, market survey reports conducted by BITC and other trade related updates.

It is my hope that this catalogue will assist potential international buyers in accessing relevant and timeous information about Botswana's goods and services that are ready for export. It is also my most profound wish that this catalogue assists in the cultivation and facilitation of the much-needed buyer/seller linkages between our companies and their counterparts both in the region and the rest of the world.

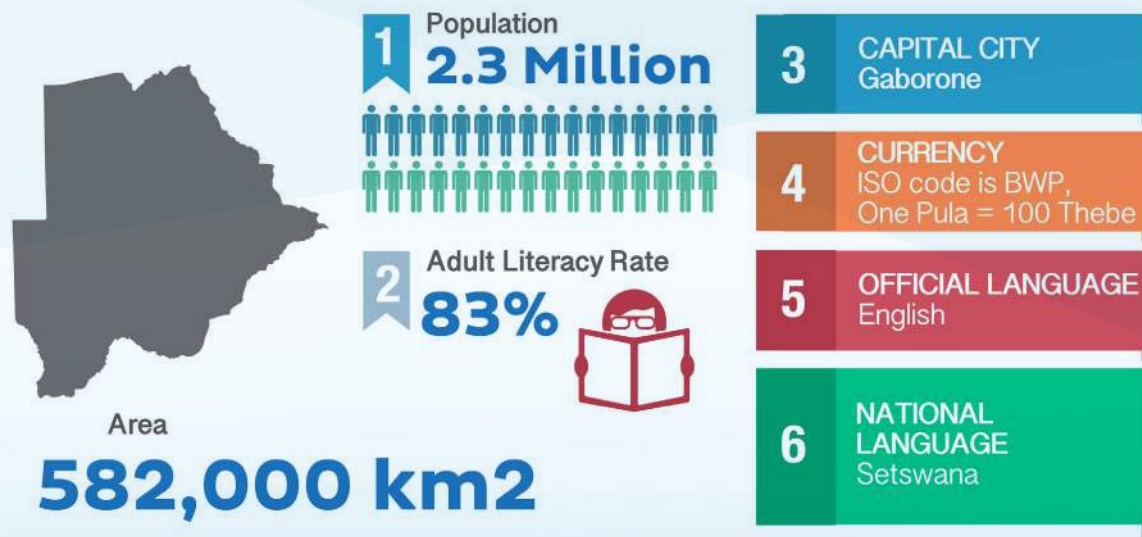
Mr Keletsositse Olebile

Chief Executive Officer

ABOUT BOTSWANA

At 582,000 km², Botswana is a land-linked country at the heart of Southern Africa, bordered by Namibia, Zambia, Zimbabwe and South Africa. Its central location in this region makes Botswana the perfect

gateway for reaching the whole of the Southern African Development Community (SADC), making it the ideal investment and trade hub.



Form of Government	: Parliamentary
Republic Head of State	: His Excellency, Dr. Mokgweetsi E. K. Masisi
Gross Domestic Product 2020	: USD 15.78 billion (World Bank)
Per capita GDP	: USD 6319.00 (World Bank)
GDP Real Growth Rate for 2020	: -7.9%
Inflation Average Rate	: 1.9%
Currency	: ISO code is BWP, One Pula = 100 Thebe
Weights & Measures	: Metric System

Why Botswana

BOTSWANA IS STABLE, PEACEFUL AND TRANSPARENT

- Botswana is committed to sound fiscal policy, economic freedom and has a steady and dramatic growth rate
- Botswana provides a peaceful and stable environment to its citizens and investors and has maintained peace since Independence in 1966
- We have zero tolerance for corruption, and we boast a sound legal system and adhere to the rule of law
- We have been consistently rated as the second least corrupt country in Africa by Transparency International.

BOTSWANA IS COMMITTED TO SOUND FISCAL POLICY, ECONOMIC FREEDOM AND HAS A STEADY AND DRAMATIC GROWTH RATE

- We have the highest sovereign credit rating by Standards and Poor global ratings (2019)
- We are named the 2nd freest economy in Africa by Heritage Foundation (2019)
- We have one of the fastest growth rates in per capita income in the world.

BOTSWANA OPENS THE DOOR TO A MASSIVE MARKET

- We provide investors with preferential access to the Southern African Development Community's (SADC) entire marketplace – over 350 million people
- Botswana provides duty-free access to South Africa, Namibia, Lesotho and eSwatini
- Botswana provides duty-free and quota-free access to the European Union (EU)

BOTSWANA IS COMMITTED TO CONTINUED GROWTH

- We are consistently investing in new and improved core infrastructure such as power plants, fibre-optic networks, roads, railways and international banking institutions
- We are establishing ourselves as a centre for Innovation and Research and Development (R&D) via the Botswana Innovation Hub.

THE GOVERNMENT OF BOTSWANA WANTS TO MAKE YOUR INVESTMENT WORK FOR YOU

- We have no foreign exchange controls or restrictions on business ownership
- Taxes are very low – 15% for manufacturing and International Finance Service Centre (IFSC) companies, 22% for other businesses and 25% for individuals
- We allow remittance and full repatriation of profits and dividends
- We offer duty-free import of machinery and equipment for manufacturing purposes

THE QUALITY OF BOTSWANA'S WORKFORCE IS SECOND TO NONE IN AFRICA

- The workforce is well educated – 83% are literate and most speak English
- There are no labour tensions;
- Our people are peaceful and humble. The different communities maintain harmonious relations.

BOTSWANA'S UNIQUE SELLING POINTS



01



Strategically linked to global market with numerous trade agreement such: SADC, SACU-ETFA, SADC-EPA, SACU MERCOSUR, UK- SACU + Mozambique EPA; AfCTFA.

02



One of the highest investment grade in sovereign credit ratings in Africa, long-term "A3", underpinned by governments continued prudent macroeconomic policies (Moody's Investors Service 2020)

03



Third freest economy in Sub Saharan Africa out of 47 countries, with regulatory environment encourages growth, and openness to foreign investment and trade promotes competitiveness and resilience. (The Heritage Foundation 2020)

04



Botswana is the highest ranked jurisdiction in Africa on policy, ranking 15th out of 77 countries

05



The country is the most attractive jurisdiction in Africa when considering both policy and mineral potential. Ranked 11th out of 77. Fraser Annual Survey of Mining 2020

06



Second least corrupt country in Africa (Transparency International 2020)

07



Competitive Corporate Tax Rates and Robust Incentives

INVESTMENT OPPORTUNITIES

KEY PRIORITY SECTORS: Some of the investment opportunities that are actively promoted by Botswana Investment and Trade Centre (BITC) include but are not limited to:



MINING:

Mining and base metals, such as gold, uranium, copper, nickel, coal, manganese and mining services. Also includes prospecting, expansion of existing mining projects, new mining projects, beneficiation of minerals and business opportunities relating to links with other sectors.



MINERAL BENEFICIATION:

Diamond trading, cutting and polishing, jewellery manufacturing and diamond related services such as security, banking, insurance, and certification and brokerage services.



EDUCATION:

Photographic safari tourism training, mining and energy technical schools, medical and health sciences school, business school, lifelong training institutions and education services for special needs students.



AGRICULTURE:

Grain, fruit and vegetables, irrigation, dairy farming, leather (raw hides and skins), pork and beef products.



INFORMATION COMMUNICATION TECHNOLOGY (ICT):

Innovative money operations, e-Waste, TV White Space, TV Broadcasting, e-Health, BPO and Call Centres and e-Commerce, software and app development and ICT in agriculture.



HEALTH:

Diagnostic facilities (imaging and laboratory), pharmaceutical manufacturing, manufacturing of biomedical equipment, medical tourism



AUTOMOTIVE:

Supply of parts and components to South Africa's automotive sector, supply of replacement parts for vehicles of large scale projects, expansion of existing component manufacturing industries, R&D services, diversification of after-sales services for private and commercial vehicles and the establishment of skills development / training facilities for auto mechanics and technicians.



CARGO, FREIGHT AND LOGISTICS:

Consolidation, deconsolidation, distribution, transport services, handling, warehouse management and integrated systems.



LEATHER AND LEATHER GOODS:

High premium leather production, high premium leather goods production, preferential market access through trade agreements to key growth markets for leather and leather products and exporting leather and leather goods to high growth markets.



ENERGY:

Power generation, extraction of coal bed methane and renewable energy projects such as solar PV plants and solar power generators as well as bio-fuel projects.



INFRASTRUCTURE: Transportation and logistics



FINANCIAL AND BUSINESS SERVICES: Banking, insurance and investment funds.

MARKET ACCESS

Botswana is at the centre of the Southern African Development Community (SADC), with market access to people in 15 countries with a combined GDP of more than US\$725 billion. SADC's Free Trade Area (FTA) launched in 2008 provides zero tariffs for at least 85% of goods traded among member states.

As a member of the Southern African Customs Union (SACU), Botswana's products enjoy duty free access to a market of more than 61 million people in five countries with a combined GDP of more than US\$60 billion, Botswana, Namibia, Lesotho, eSwatini and South Africa.

Furthermore, through SACU, Botswana is part of the Trade, Investment and Development

Cooperation Agreement (TIDCA) with the United States (US); the FTA agreement with the EFTA States and Preferential Trade Agreement (PTA) with MERCOSUR. Negotiations for a PTA with India are still in the offing.

Botswana is eligible for trade benefits with the US under the African Growth and Opportunity Act (AGOA).

The Interim Economic Partnership Agreement (IEPA) ensures unhindered market access for existing export products to the EU. As a member of the World Trade Organisation (WTO), Botswana is committed to the implementation of WTO agreements.

CONNECTIVITY

ROAD:

Botswana is connected to South Africa to the south, Zambia and Zimbabwe to the north, and Namibia to the west by a network of tarred roads. The Trans-Kalahari Corridor links South Africa and Walvis Bay in Namibia and transcends through Botswana, while the North-South Corridor of key Sub-Saharan transport routes also passes through Botswana. The ongoing Kazungula Bridge project will connect Botswana and Zambia, replacing the existing ferry over the Zambezi River, and improving linkage to the north.

RAIL:

Botswana Railways together with South Africa's Spoornet to the south and National Railways of Zimbabwe to the north provides a connection to the north and south of an unbroken rail link to Zambia, The Democratic Republic of Congo (DRC), Angola, Mozambique, Tanzania and Malawi. It operates containerised Dry Port facilities in the capital Gaborone, in the north at Francistown and Selebi - Phikwe. The Trans-Kalahari Railway project which is yet to commence, will connect Botswana to a sea port on the Namibian coast. A Dry Port facility to be established in Walvis Bay will offer a shorter route for exports to Europe and the Americas, at lower cost.

AIR:

Botswana has four international airports and 19 well-maintained airfields throughout the country. Gaborone is linked directly by air with South Africa, Zimbabwe, Zambia and Kenya.

HIGH CAPACITY:

High Speed Data Transmission - The East African Submarine Cable System connects Botswana through Durban, South Africa, to Europe, the Americas, the Middle East and Asia. The West Africa Cable System will when completed connect Botswana through Namibia to the west, to the United Kingdom.

COMPANY PROFILES

Exporters Only





01

Agriculture & Agro processing

PROFILES:

- BAMB
- **BOKOMO BOTSWANA**
- FOODS BOTSWANA
- **CROSSCORN**
- BOLUX GROUP
- **NUTRI FEEDS**
- SEEDCO
- TECHNO FEEDS

**Bio:**

The Botswana Agricultural Marketing Board (BAMB) was established by an Act of Parliament, No. 2 of 1974 mandated to provide a market for locally grown scheduled crops such as cereals, pulses/beans and oilseeds, and ensure that adequate supplies exist for sale to customers at affordable prices. BAMB purchase or obtain supplies from any source. Set prices for purchase or sale of produce. Import or export any scheduled produce. Arrange for transport, storage, processing and sale of scheduled produce. Enter into any transactions, which in the Board's opinion will facilitate proper discharge of its functions. Currently BAMB operates Fourteen (14) branches and Twenty-Three (23) sales offices countrywide, where it buys, stores and sells produce and inputs. BAMB has storage capacity in excess of 100 000 metric, 85 000mt of which is of silo space at Pitsane, Francistown and Pandamatenga and the rest is made of warehouses.

Production Capacity: Sorghum 30000Mt
Maize 30000Mt
Beans 10000Mt

Export Products: Contract farming, Grains, Oil seeds, Pulses/Beans, Agricultural inputs, Value added products, Veterinary services

Location: Gaborone Francistown Botswana

Contacts: +267 3951341
info@bamb.co.bw
www.bamb.co.bw

**Bio:**

Bokomo Botswana (Pty) Ltd is a wheat and maize milling company that was established in 2003 as a joint venture between PF Brink (Pty) Ltd, a Botswana registered company, and Pioneer Foods (Pty Ltd of South Africa). The company strives to improve value for its customers, shareholders, employees and suppliers by continuously aspiring to be the best Fast Moving Consumer Goods sales and Distribution Company in the country. Bokomo Botswana has a milling and packaging factory and warehousing facility adjacent to its Head office along Takatokwane road in the centre of the Capital city Gaborone. The company also operates a distribution depot in Francistown, which caters for our customers in the northern region of the country.

Production Capacity: 20 MT per year

Export Products: White Star super maize meal, Bokomo flour, Pure Sugar, Notwane eggs, Richmark chickens, Bokomo breakfast cereals, Safari dried fruit, Heinz sauces, Ceres juices, Spekko rice, Pasta

Export Market: South Africa

Location: Gaborone Francistown

Contacts: +267 3939218
pvanwyk@pioneerfoods.co.za

**Bio:**

Foods Botswana pride themselves on the production of a well established, nationally renowned products made for Botswana, by Botswana. Protecting the position of their local - flavor house brands is a continuous management process with their resources constantly focused on developing their products and improving quality.

Production Capacity: Maize meal 16000 tonnes annually,
Sorghum 12000 tonnes annually

Export Products: Tsothothe cereal meal, Instant Pre-cooked fortified maize soya, sorghum meal porridge, maize meal, samp & malt

Export Market: Namibia, Lesotho & DRC

Location: Gaborone, Botswana

Contacts: +267 3911074
lab@foodsbotswana.co.bw

**Bio:**

Crosscorn (Pty) Ltd is a reputable company which was established in 2013 as a seed distributor, and has since evolved into Botswana's only producer of seeds, supplying farmers countrywide. The company accounts for over half the market share of maize seeds produced and sold in Botswana, and we produce and sell half of the sorghum seeds, cowpea seeds and animal fodder seeds in the country.

Production Capacity: 750 tonnes of seeds per year
White maize, Yellow maize, Cowpeas, Segalane

Location: Gaborone, Botswana

Contacts: +267 3960758/9
sales@crosscorn.co.bw
www.crosscorn.co.bw

Crosscornbotswana

**Bio:**

Established in 1985, Bolux Group is the largest maize and wheat milling company in Botswana. The company is the proud producer of the following products: A1 Super Maize Meal, Snowwhite Flour, Pasta King, Maxi Bread, Bolux Group has been successfully feeding the nation with pride for over 35 years. The Company imports raw material (maize and wheat grain) from across the globe and the entire production and packaging process takes place on site in Ramotswa with depots infrastructures at Palapye, Francistown and Maun. Bolux Group sees itself as a dynamic and mature industrial company that contributes meaningfully to the economy of Botswana. As a non-mining entity, the company continues to play its part in the economic diversification and industrialization efforts of Botswana.

Being a sizable producer of chop (a bi-product of maize milling) and bran (a bi-product from wheat milling) Bolux is the largest supplier of animal feed to the beef sector. By supplying farmers, feedlots (BMC) and Government, the company is an integral part of the Beef sector value chain and is a major contributor to that sector. Bolux Group is committed to supporting local farmers in commercial farming activities through committing to buy local crop. This is meant to support local farmers and see growth in commercial farming activities. Although local farmers produce only a small fraction of the company's needs, Bolux Group is committed to contributing more meaningfully to this sector and help grow that part of the economy.

Production Capacity: Maize Meal- 4000 tonnes, Flour-6000 tonnes, Pasta 700 tonnes

Export Products: Maize meal, Flour and Pasta

Export Market: Zimbabwe

Location: Ramotswa, Botswana

Contacts: +267 5390275

colinm@bolux.bw

**Bio:**

NUTRI feeds produces technologically and scientifically advanced broiler feeds.

Production Capacity: 5 MT per year

Dairy feed range, Beef cattle feed range, Sheep feed range, Animal Tub feed range, Ruminant feed range, Lick supplement range, Game feed range, Boiler feed range, Layer feed range, Pig feed range

Export Market: South Africa

Location: Pilane, Botswana

Contacts: +267 5728375

nutrifeedsbotswana@gmail.com

<https://www.nutrifeeds.co.za>



**Bio:**

Seed Co Pty Ltd has been in Botswana for 17 years. We are committed to enhancing the productivity of farmers. This is primarily achieved through the provision of quality seed of the best food crop varieties suited to each agro-ecological environment in various parts of Botswana. Some of our varieties include white maize which consist of different varieties such as very SC 301, SC403, and SC411. We also have yellow maize which includes SC 506, SC 602 and SC 608. SC 301 is our new variety which is classified as an ultra-early maturing variety as it takes two and a half months to mature. Its produce ranges from two to five tons per hectore. This variety is good for green mealies product as it has a medium grain drying rate. It is not prone to maize diseases and it can survive in high climatic conditions. However, the right crop variety and certified seed are only two parts of the farmer's strategy to be productive.

Production Capacity: N/A

Export Products: Business consultant, Agricultural services, Agricultural cooperative on Maize, Cowpeas, Sorghum

Location: Gaborone, Botswana

Contacts: +267 3911907
marketingbw@seedcogroup.com |
www.seedcogroup.com



Techno Feeds (Pty) Ltd

Bio:

Techno Feeds as the leader in ruminant and animal feeds, supplements and concentrates in Botswana has been manufacturing since 2007. With our Factory in Gaborone, factory shops in Gaborone and Jwaneng and distributors all over Botswana we provide an essential service of developing, manufacturing and distributing top quality ruminant and animal feeds. Techno Feeds is proud that we have developed feed specifically for Botswana using the latest technology.

We use the best quality raw materials and ensure that all our products exceed the BOBS standards. We are conscious of our obligation to farmers to ensure that the supplements and feeds we supply conform to the EU requirements to ensure that the livestock producer can market his product to the EU via the BMC with confidence.

Production Capacity: 8 tonnes of feeds per day

Location: Gaborone, Botswana

Contacts: +267 3167238

+267 72872314

fliis@technofeeds.co.bw



Techno Feeds



02

Applied Information & Communications Technology

PROFILES:

- BRASTORNE PTY LTD
- DITEC MOBILE PTY LTD



Brastorne (Pty) Ltd

m?otra

mAgri

Bio:

Brastorne Enterprises is a tech company that has rapidly grown into profitable ICT solutions provider, with a diverse portfolio offering services across various industries such as marketing, data management, Mobile Technology Solutions i.e Unstructured Supplementary Service Data (USSD), voice (IVR) and Short Message Service (SMS). Brastorne Enterprises is driven by its partnerships with leading organizations to develop high performance solutions that improve productivity, reduce costs and have high social impact by providing access to information, markets and financing to the underserved communities.

Production Capacity: 200 000 monthly users
Export Products: ICT, USSD (Unstructured Supplementary Service Data), USSD (Unstructured Supplementary Service Data), Voice (IVR)
Location: Gaborone, Botswana
Contacts: +267 3114683
martin@brastorne.com
www.brastorne.com

Brastorne Enterprises Brastorne Enterprises



Ditec Mobile (Pty) Ltd



Bio:

Ditec Mobile is a 100% Botswana Citizen owned company, founded in 2002. They design, customize and ultimately manufacture mobile phones. They also offer a full range of exceptional mobile phones with a wide appeal to the people who appreciate not only the beauty, but the broad functionality of mobile phones. The company also has a visible foot print in over 10 African countries including Uganda where one of our designs, Pioneers traces its origin from.

Production Capacity: 10 000 cellphones per month
Export Products: Mobile phones, computer software and hardware
Export Market: Mozambique, South Africa & Uganda
Location: Gaborone, Botswana
Contacts: +267 73451009/73311271
sales@ditecmobile.com

Brastorne Enterprises Brastorne Enterprises

safe

Republic of Botswana

Powered by BRASTORNE



03

AUTOMOTIVE

PROFILES:

- **KROMBERG & SCHUBERT BOTSWANA**
- **PASDEC AUTOMATIVE TECHNOLOGIES**
- **BEARING MAN BOTSWANA**
- **CHLORIDE EXIDE BOTSWANA**
- **GLOBAL LUBRICANTS**

**Bio:**

Kromberg & Schubert focuses on the development and production of complex wiring systems for the automotive industry. In Addition, plastic parts are currently produced alongside custom wires in over 40 global locations. The dedication and integration of our Development, Production and Quality Management have top priority at Kromberg & Schubert in order to enable any solution to be implemented to perfection.

Export Products: Vehicle ignition wire sets parts

Location: Gaborone, Botswana

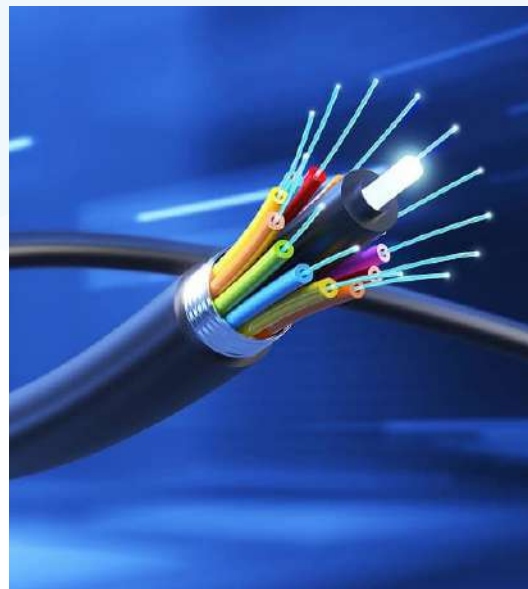
Export Market: China, South Africa, Tunisia & Germany

Contacts: +267 3631110

seand@ksrb.kroschu.com

www.kromberg-schubert.com

Pasdec Automotive Technologies

**Bio:**

Established in 1969, Pasdec Automotive Technologies (Pty) Ltd leads in the supply and manufacture of automotive wiring harnesses to the OEM vehicle manufacturers. Our manufacturing plant in Lobatse, Botswana is purpose-built hence capacities are customized to accommodate both high volume production lines and lesser volume jobbing shop-type orders. The 20 000m² plant is designed for current demand and future growth opportunities.

All products manufactured by Pasdec exceed international ISO requirement standards in terms of quality and applied technology further enhanced by "best global practice", "continuous improvement programmes" and customer-specific standards.

Production Capacity: \$0.82 million per annum

Export Products: Automotive wiring harnesses

Export Market: South Africa

Location: Lobatse Botswana

Contacts: +267 5330950

kpather@pasdec.co.za

www.pasdec.co.za



Bearing Man Botswana

Bio:

Manufacture of Bearings, power transmission components, Drives motors and controllers, Hydraulics, pneumatics and Filtration as well as valves and Lubrication, Bearings & Seals, Heavy and Light Duty Materials Handling, Fasteners, Gaskets and Tools.

BMG is a proudly certified ISO 9001:2015, (Quality Assurance), 14001:2015 (Environmental Management) and 45001:2018 (Health and safety Management) company. All interested parties are a paramount focus and the company adheres to applicable legislation as per its processes.

Production Capacity: 15 000 units per week

Export Products: Bearings

Location: Gaborone, Botswana

Contacts: +267 3972273

www.bmgworld.net



CHLORIDE

Battery Manufacturers of Botswana

Bio:

Chloride Exide Botswana (Pty) Ltd. was established in 1990 to produce 30,000 automotive batteries a year for the Botswana market. Over the years the company has grown from strength to strength and is seen as one of the market leaders in producing automotive batteries within the region. Following a 20 year period of growth the Company established a state of the art factory in Phakalane. This factory is capable of producing over 500,000 automotive batteries per annum. Approximately 70% of our output is for export market. A comprehensive range of batteries are now marketed in Malawi, Namibia, South Africa, Zimbabwe, Mozambique, Zambia and Angola. Locally the batteries are marketed under the Taurus brand by our partner company Taurus Batteries.

Production Capacity: 500,000 automotive batteries per annum

Export Products: Automotive Batteries

Export Market: Malawi, Namibia, South Africa & Mozambique

Location: Gaborone Botswana

Contacts: +267 3959990
solly@chloride.co.bw
www.chloride.co.bw




Global Lubricants (Pty) Ltd

**Bio:**

Global Lubricants (PTY) was an independent ISO 9001 certified blender of lubricants that has been manufacturing quality automotive and industrial lubricants in Francistown, Botswana since 2009. Responding to international trends, OEM requirements and the desire to be part of an international network Global Lubricants teamed up with Strub-SA and have together set up a manufacturing hub in the heart of the SADC region, Botswana.

Our products are manufactured to International Specifications and Standards and based on the latest technologies available. To ensure quality products on a consistent basis, Strub-SA, obtained ISO 9001-2015. The Botswana facility is also ISO certified by the Botswana Bureau of Standards.

Export Products: Lubricants

Location: Francistown, Botswana

Contacts: +267 2414467 / 72894340
sales@strubbotswana.com
www.strubbotswana.com



04

Education & Skills Development

PROFILES:

- **UNIVERSITY OF BOTSWANA**
- **BOTSWANA INTERNATIONAL UNIVERSITY OF SCIENCE AND TECHNOLOGY**
- **LIMKOKWING UNIVERSITY OF CREATIVE TECHNOLOGY**
- **ABM UNIVERSITY COLLEGE**
- **BOTHO UNIVERSITY**
- **BOTSWANA UNIVERSITY OF AGRICULTURE AND NATURAL RESOURCES**
- **BAISAGO UNIVERSITY**
- **ABM UNIVERSITY COLLEGE**
- **GEMOLOGICAL INSTITUTE OF AMERICA (GIA)**
- **INNOLEAD**

**Bio:**

The University of Botswana is a world-class institution that has established and developed a range of learning, social, cultural and recreational opportunities that will facilitate the full realisation of your potential for academic and personal growth. Our student-centred, intellectually stimulating and technologically advanced teaching, learning and research environment will ensure positive academic and social experiences throughout your study.

Facilities: Business, Education, Engineering and Technology, Health Sciences, Humanities, Medicine, Science and Social Sciences

Export Services: Educational Services

Location: Gaborone, Botswana

Contacts: +267 3550000
www.ub.bw

**Bio:**

Limkokwing University Botswana maintains the tradition of attracting international students from inside and outside the region. The inaugural intake of Limkokwing Botswana students included students from 9 countries throughout Africa.

Export Services: Educational Services

Location: Gaborone, Botswana

Contacts: +267 318 0135
www.limkokwing.net/botswana

**Bio:**

The Botswana International University of Science and Technology (BIUST) is a Government of Botswana supported institution established through the BIUST Act (CAP 57:05) as a research-intensive University that specialises in Science, Technology, Engineering & Mathematics (STEM) at both undergraduate and post-graduate level. It aims to increase competitiveness, economic growth and sustainable development; address the shortage of skilled scientists and technologists; increase movement of skilled people across national boundaries; stimulate research, innovation, and technology transfer; improve society's aspirations to improve health, wealth and well-being; address increased demand for access to tertiary education; and enable a more competitive and innovative tertiary education sector.

Facilities: Centre for Business Management, Entrepreneurship and General Education Faculty of Engineering & Technology

Export Services: Faculty of Sciences Educational Services

Location: Gaborone, Botswana

Contacts: +267 4931000
info@biust.ac.bw
www.biust.ac.bw



**Bio:**

Botho University was established in 1997 and has rapidly evolved over the years to become a leading multidisciplinary high-quality tertiary education provider. All programmes offered by Botho University are approved by the Botswana Qualifications Authority (BQA), the Council on Higher Education (CHE) in Lesotho and the Namibian Qualifications Authority (NQA).

Facilities:

Faculty of Business & Accounting,
Faculty of Engineering and Technology,
Faculty of Health and Education and
Faculty of Hospitality and Sustainable
Tourism

Export Services:

Educational Services

Location:

Gaborone, Botswana

Contacts:

+267 3635421 / 3635422 / 3635446
admissions@bothouniversity.ac.bw
www.botswana.bothouniversity.com



@BothoBU



@Botho University



Botho University

**Bio:**

The mandate of the University is to provide higher education and training in the field of agriculture, natural resources and such other allied and related subjects as can be determined by the University Council from time to time. The University intends to produce market ready graduates for the agricultural and natural resource sectors through innovative teaching and research.

Facilities:

Faculty of Agriculture
Faculty of Sciences
Faculty of Natural Resources
Faculty of Animal and Veterinary
Sciences
Faculty of Graduate Studies and
Research
Faculty of Agri-Business, Education
and Extension

Export Services:

Educational Services

Location:

Gaborone, Botswana

Contacts:

+267 3650100 / 267 3650275
info@buan.ac.bw
www.buan.ac.bw



BA ISAGO
UNIVERSITY

Bio:

BA ISAGO University's academic programmes are designed to meet the labour market needs of Botswana's economy in the 21st century. It is continuously being recognised as an institution of choice for tertiary education, and increasingly winning the trust, respect and confidence of its stakeholders internally and outside the country. The University offers credible market driven and internationally recognized programmes that prepare learners for the global job market.

Facilities:

Faculty of The Built Environment, Arts
and Science
Faculty of Commerce
Faculty of Education
Faculty of Law and Para-Legal Studies
School of Graduate Studies and Research

Export Services:

Educational Services

Location:

Gaborone, Botswana

Contacts:

+267 3957744
www.baisago.ac.bw

**Bio:**

ABM University College has a rich history of Human Resource Development. The institution was registered with the Ministry of Education in 1990 as a private tertiary education institution, making it one of Botswana's oldest private tertiary education establishments. To date, the institution has contributed immensely to the development of Human Resource in the country, having trained thousands of people employed in different positions in government, parastatals and private corporate bodies within various sectors of the economy while others are self employed. ABM strives for academic excellence and is the place for those who seek an intellectually stimulating and inspiring environment that places great importance on life-long learning and self actualisation.

ABM also prides itself in contributing towards the achievement of Botswana's Vision 2016 pillar of building "An Educated and Informed Nation" through the delivery of relevant and enriched programmes in its quest for excellence. Over the years, ABM has formed strategic partnerships with several local and international bodies and institutions such as the Association of African Universities (AAU). The Council is constituted by professionals from different areas of expertise; these are men and women of integrity and repute, who bring different expertise relevant to the business of the institution.

Production Capacity: Enrollment 200-300 students per year
Average 80 graduates per year

Export Products: Educational Services

Location: Gaborone

Contacts: +267 3956887

bmolefhi@abm.ac.bw

www.abm.ac.bw



GIA®

Bio:

An independent nonprofit organization, GIA (Gemological Institute of America), established in 1931, is recognized as the world's foremost authority in gemology. GIA invented the famous 4Cs of Color, Clarity, Cut and Carat Weight in the early 1950s and in 1953, created the International Diamond Grading System™ which, today, is recognized by virtually every professional jeweler in the world.

Production Capacity: N/A

Export Products: Gemstone Education,
Gemstone Laboratory

Location: Gaborone USA Thailand China India

Contacts: +267 3180398

giabotswana@gia.edu

www.gia.edu

**Bio:**

InnoLead Consulting is a consultancy firm based in Gaborone, Botswana. Our core purpose is to help Southern Africa and Africa as a whole to execute primarily in the areas of strategy, project management, performance management and training. We proudly offer a unique and innovative bouquet of consulting and training services. A trail blazing management consultancy firm, born of the desire to understand the challenges faced by organisations Southern Africa and the African region, InnoLead Consulting provides solid and pragmatic solutions. Mission-InnoLead consulting through the i-Lead concept allows African professionals to grow into mature and reliable consultants in their area of expertise as core staff and associates. Vision-Through the i-Lead concept, our consultants grow from Analyst level to Senior Consultant level through active coaching, mentoring and access to global best practice methodologies.

Production Capacity: N/A

Export Products: Consultancy

Export Market: Zambia

Location: Gaborone

Contacts: +267 3909102

innolead@innolead.co.bw

05

Financial & Business Services

PROFILES:

- AFINITAS
- **AFRICAN PRACTICE**
- ALPHA DIRECT
- **BECI**
- BANC ABC
- **AFRITEC**
- EMERITUS
- **TUAREG ENERGY BOTSWANA**
- RDC PROPERTIES LIMITED
- **FINDEV**
- MLIMANI CITY
- **NORSAD FINANCE**
- LETSHEGO
- **WILDERNESS SAFARIS**

**Bio:**

Afinitas Limited ("Afinitas") is a pan African investment holding company that has a mandate to provide seed capital and develop new Africa focused businesses. Afinitas is listed on the Botswana Stock Exchange and is also accredited to the Botswana International Financial Services Centre (IFSC). The Company has three investee businesses, namely, Africa Events Limited, Ethiopia Investments Limited and Adventis Limited. Africa Events Limited (AEL) is a specialist events management company that focuses on investment oriented events. AEL owns the rights to the Africa Financial Services Investment Conference (AFSIC).

Export Services: Asset Management
Location: Gaborone, Botswana
Contacts: +267 3184075
help@africanfinancials.com
www.afinitas.com

**Bio:**

Africa Practice is a strategic advisory firm, operating at the nexus of industry and government. We supply insights and advocacy solutions to corporations, investors, governments and foundations in Africa, enabling them to see more clearly, engage with confidence and unlock value to drive sustainable and equitable development.

Export Services: Communications Consultancy
Location: Oodi, Botswana
Contacts: +267 72331595
africapractice.com

**Bio:**

Alpha Direct is all about giving our clients world-class service, creating and maintaining a motivating workplace for our people, contributing to society and delivering consistent returns for our shareholders. Our clients are our foremost priority which is why we go the extra mile to provide them with value-for-money products, fantastic service and a great deal on their insurance. We can underwrite virtually any risk large or small and give you the peace of mind you want, all at a reasonable price. Our partnerships give us access to some of the best talent available to underwrite complex risks such as Engineering, Aviation, and Specialised Covers.

Export Services: Car, Household content, Business, Bus, Truck insurance, Workers, Travel insurance and Instant insurance
Location: Gaborone Botswana
Contacts: +267 3928264
godirect@alphadirect.co.bw
<https://www.alphadirect.co.bw>

**Bio:**

Founded in 1996, BECI (Export Credit Insurance and Guarantee Company Botswana) is the only credit insurer in Botswana, and is a private company – wholly owned by Botswana Development Corporation Limited (BDCL). BECI's primary function is to develop and equip businesses with Trade Credit Insurance policies to protect them from the danger of non-payment by credit customers. In addition, the company now offers a selection of business growth tools, such as Construction Bonds and Guarantees. require.

Export Services: Bonds, Guarantee, Domestic Trade credit insurance, Exort Trade Credit Insurance, Medium to long term export credit insurance, COVID-19 Guarantee scheme guidelines
Location: Gaborone Botswana
Contacts: +267 3188015
beci@beci.co.bw
www.beci.co.bw



BancABC


Bio:

ABC Holdings Limited (ABCH) is a pan-African financial services provider, headquartered in Gaborone, Botswana. ABCH has five (5) commercial banking licences operating through the BancABC franchise in Botswana, Mozambique, Tanzania, Zambia and Zimbabwe. The group has been in existence on the Africa continent for 60 years. Over the years it has evolved through a series of mergers and acquisitions into a recognised African banking franchise mainly through the BancABC brand. In March 2014, ABC Holdings was acquired by Atlas Mara, and in 2017 ABCH relocated its offices to Botswana from South Africa in 2017.

Export Services: Financial Services
Location: Gaborone, Botswana
Contacts: +267 3674325
www.bancabc.com



AFRITEC®

Bio:

Afritec Holdings (Pty) Ltd is a Botswana incorporated entity which provides source deducted loans predominantly to government employees. It also has agreements with other organizations and corporations locally. Afritec Holdings (Pty) Ltd holds shares in Furnmart Holdings, with network in Namibia and South Africa. The company's main aim is to offer competitive loan and micro finance products.

Export Services: Financial Services
Location: Gaborone, Botswana
Contacts: +267 3670702
www.afritecloans.com



Emeritus




Reinsurance

Bio:

Emeritus International Reinsurance Company (Pty) Ltd is an investment and coordinative entity, holding several synergistically linked subsidiary companies operating in Zimbabwe and within Africa with insurance as the Group's core business. In Botswana Emeritus International Reinsurance Company operates primary focus on core FMCG business. The Group has recently entered the Australian market by buying a stake in an Australian business named Seasons Group.

Export Services: General reinsurance, Life and Health Services
 Risk management
Location: Gaborone Botswana
Contacts: +267 3121041
www.emeritusre.com

 Emeritus-Reinsurance



Tuareg Energy Botswana

Bio:

Tuareg Energy Botswana (Pty) Ltd is a subsidiary of Tuareg Energy Ltd in Mauritius. The Botswana subsidiary was set up as a regional holding investment company which expanded its operations into Zambia, Zimbabwe and Mozambique. The immediate and initial investment in Botswana has already been realised through an acquisition of a 55% stake in a locally registered company called Investigo Consultants (Pty) Ltd based in Maun. The Company invested by acquiring aircrafts for leasing to one of the local companies and Tuareg Energy Botswana's investment mainstream is in aviation.

Export Services: Financing Operations (Financing Services, Funds Management, Risk Management)
Location: Gaborone Botswana
Contacts: +267 3188015
beci@beci.co.bw
www.beci.co.bw



RDC Properties Limited

Bio:

RDC Properties International is a variable rate loan stock company. The Company develops and invests in modern commercial, industrial and residential buildings in various locations in Botswana and Madagascar. The Company operates through the property rentals segment. It focuses on deriving its revenue from the rental of investment properties and identification of development First Reinsurance Company (Pty) Limited Botswana (First Re), the first reinsurance company to register in Botswana, giving it a competitive advantage in the local market.

Export Services: develops and manages commercial, industrial and residential developments

Location: Gaborone, Botswana

Contacts: +267 3901654
rdc@rdc.bw
www.rdcbw.com



Bio:

FINDEV (Propriety) Limited is a leading financial software development company in Africa. For more than a decade the company has delivered unique software solutions to numerous clients in the financial services industry within the African region. The company provides off the shelf solutions or customized solutions according to a client's needs. Some of the company's core off-the-shelf solutions include; micro-finance (collection from source), group scheme insurance/short-term insurance, equity trading, share trading, corporate and government bonds, ETFs, money market trading, arrears management etc.

Export Services: Financial Services

Location: Gaborone, Botswana

Contacts: +267 3904488
mail@findevsoft.com
www.findevsoft.com



Bio:

Island View (Propriety) Limited is a property development company that is currently trading as Mlimani City Island View (Pty) Ltd, and expanded into Tanzania through Mlimani Holdings Ltd - a property company consisting of a retail mall, 6 commercial office blocks, an international conference centre and 50 residential units, currently valued at US\$100m.

Export Services: Financing Services

Location: Gaborone Botswana

Contacts: +267



Bio:

Norsad Finance Limited, incorporated in 2011 and located in Gaborone, Botswana, is a provider of flexible and customized long-term financing to mid-market companies and financial services providers in Southern Africa. Norsad has a capital base of over USD 130 million and prioritizes investments to financially sustainable companies that also deliver substantive positive social and environmental impact.

Export Services: Accounting and Financial Administration (Management Services, Financial Advisory and Administration Services)

Location: Gaborone Botswana

Contacts: +267 3160860
norsad@norsadfinance.com
www.norsadfinance.com

**Bio:**

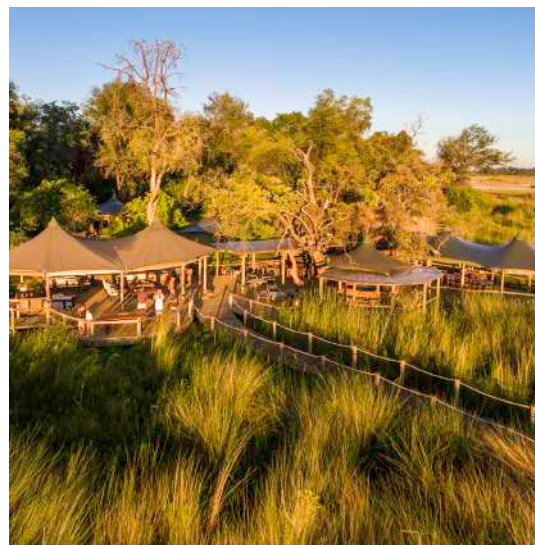
Letshego Holdings Limited ("Letshego") was incorporated in 1998 and is headquartered in Gaborone, Botswana. The Group provides simple, appropriate and accessible consumer, microfinance and savings solutions to the financially under-served customers. It was publicly listed on the Botswana Stock Exchange in 2002. Today it is one of Botswana's largest indigenous groups, with a market capitalisation of approximately USD500mn, placing it in the top 50 listed sub-Saharan African companies (ex-South Africa), with an agenda focused on inclusive finance. It has a presence across Southern, East and West Africa (Botswana, Ghana, Kenya, Lesotho, Mozambique, Namibia, Nigeria, Rwanda, Swaziland, Tanzania and Uganda),

Export Services: IFSC
Location: Gaborone, Botswana
Contacts: +267 364 3300
info@letshego.com
www.letshego.com

**Bio:**

At Wilderness Safaris we believe in creating life-changing journeys and have been doing so for over 38 years. Our purpose today is stronger than ever in our dedication to conserving and restoring Africa's wilderness and wildlife. Operating in seven countries with over 40 camps, we exist to protect wilderness areas and the fauna and flora they support. We believe that in protecting these areas, and including local communities in this process, we will make a difference to Africa and ultimately the world.

Export Services: Eco-Tourism
Location: Maun South Africa Namibia Zimbabwe
Contacts: +267 6860086
enquiry@wilderness.co.za
wilderness-safaris.com

**Bio:**

Sefalana has grown into a trusted household name in Botswana through establishing itself as one of the country's leading businesses in the Fast-Moving Consumer Goods (FMCG) sector. Our headquarters are located in Gaborone, Botswana and our primary focus is on the core FMCG business. The Group however remains well diversified, with a strong, reliable presence in manufacturing of nutritious cereal meals, UHT milk and soaps and detergents.

Export Services: FMCG
Location: Gaborone South Africa Namibia Lesotho
Contacts: +267 3913661
info@sefalana.com
www.sefalana.com

06

Manufacturing

PROFILES:

- ACTFIT PTY LTD
- ALIBOATS
- APACHE ROOFS
- AST RECYCLING
- NORTHERN FIXTURES
- BOTSWANA MEAT COMMISSION
- DLG NATURALS BW
- LOBATSE CANVAS
- BOTSWANA VACCINE INSTITUTE
- FOAMEX INDUSTRIES
- F&G BOTSWANA
- EBONY BOTSWANA
- DONKEY MILK INDUSTRIES
- DULUX
- KWENA CONCRETE PRODUCTS
- KBL
- KROCOVANGO CROCODILE FARM
- GENPACK
- GOPESHA
- LESEDING INTERIOUS
- LOBATSE CALY WORKS
- MORINGA TECHNOLOGY INDUSTRY
- KWENA ROCLA
- O3 BEVERAGES
- FISRT POLYMERS
- FLO-TEK
- KALAHARI CANVAS
- KALAHARI FLOOR TILES
- KGALAGADI PLASTICS INDUSTRIES

- MAKORO BRICK
- MABEO FURNITURE
- RHINO STEEL ROLLING MILLS
- KGALAGADI SOAP INDUSTRIES
- KEMTEK
- MUSHTAQ PLASTICS
- ORGANIC FERTILIZER MANUFACTURING
- PLASTECH
- PORTFOLIO PHARMACEUTICALS
- POWER ENGINEERING
- RELIANCE FOUNDRIES
- SEEN FOODS LOGISTICS
- RED LOTUS T/a Matlalo
- SEVEN STAR STEEL PIPE GROUP
- SLOARMATICS BOTSWANA
- EMERALD SOF GOLD
- TROPICANA
- STRICT INVESTMENTS
- WILD MARULA OIL
- ZISMO ENGINEERING
- THE BULB WORLS
- UV BOTSWANA
- B&M GARMENTS

- CONTEMPORARY LINES
- DINESH TEXTILES
- GLAM COLLECTIONS
- NORTEX TOWELS
- WA WESTERN APPARELS
- PREMIER CLOTHING

Actfit (Pty) Ltd

Bio:

Actfit (Pty) Ltd started in 2007 the managing director's vision was to manufacture locally and install all products to major and minor construction projects which in the past engaged South African companies to do the same work. The company concentrates on providing a personalised, high quality and reasonable priced product and service to its clientele. The quality, service and competitive pricing has brought more and more of new construction companies and private clients to Actfit to get the best solutions. The company operated from Plot 22090, Unit 1 G-West Industrial, Gaborone. This large workshop has an area enables the company to expand their activities and increase local employment and volume of quality work done.

Production Capacity: 3000 units per week
Export Products: Aluminium window and door frames
Location: Gaborone, Botswana
Contacts: +267 3190263
 actfit@mega.bw
 http://actfit.biz/



Bio:

Established in February 2009, Apache Roof Tiles has grown to become one of the largest concrete roof tile manufacturers in Botswana. Apache Roof Tiles started off with 11 Botswana employees and now have 31, effectively empowering the local people. The company offers a range of interlocking tile profiles to suit every building design, from prestigious high-end private dwellings to tight budget projects such as group housing. Their high quality concrete roof tiles are available to be delivered all over the country and in the immediate SADC region, at factory prices. They manufacture three different tiles profiles namely, the Double Roman, the Tuscan and the Shingle. The tiles come in a range of 5 colours - Terracotta, Red, Charcoal, Brown and Tan. Any combination of two colours can be used to create a, one of a kind unique finish on your roof. They also produce V-ridges and Gable rolls, otherwise known as tapered ridges, and other accessories like rake-verges and hip starters. require.

Production Capacity: 100 000 units per month
Export Products: Manufacturing-Roof Tiles
Location: Gaborone, Botswana
Contacts: +267 3902306
 info@apache.co.bw
 www.apacherooftiles.com

ALIBOATS



Bio:

Whatever your boating requirements are, ALIBOATS are committed to finding a solution for you amongst our extensive range of products, so that you too can enjoy life on the water. a privately owned joint venture (citizen 75% and Foreign 25%) company that began its operations in 1986. The company currently employs 70 people. Situated in plot industrial site in Maun. The company manufactures swamp cruiser boats.

Production Capacity: 200 Boats per year
Export Products: Boats
Export Market: Namibia & Zambia
Location: Maun, Kasane, Botswana
Contacts: +267 6860201
 admin@aliboats.co.za
 www.aliboats.com



AST recycling

Bio:

We are specialists in scrap catalytic converters and electronic waste recycling. Our services extend beyond e-waste recycling and also include a full turn-key solution of IT Asset Management (ITAM) and IT Asset Disposal (ITAD).

Production Capacity: Over 5 tonnes per month
Export Products: Recycling
Export Market: South Africa, Lesotho, Swaziland & Mozambique
Location: Gaborone, Botswana
Contacts: +27 727201507
 info@astrecycling.co.za



Northern Fixtures

Bio:

Babic Holdings (Pty) Ltd is the biggest manufacturer of stationery in Botswana with an EDD Certificate and also we are one of the companies that have been chosen by BITC to use the "Botswana pride" logo on our products. We manufacture all sizes & types of hard cover & soft cover note books, invoice books, registers, ledgers, accounting books, minute books, envelopes, files, paper & allied products, printing etc. Totally, our product list contains 180 items.

Production Capacity: N/A
Export Products: Stationery, both office and scholastic equipment
Location: Gaborone, Botswana
Contacts: +267 3708114
 tebogo@nfb.co.bw
 www.babicholdings.com/



**Botswana
Meat
Commission**
Meat Perfection Defined

Bio:

BMC is a Parastatal and was established in 1965 to promote the development of the country's livestock industry as well as the country's beef and related products globally. Its headquarters is in Lobatse. The premises are an integrated complex housing an abattoir, cannery and byproducts plant as well as a tannery. Besides owning three abattoirs in Botswana, BMC has cold storage facilities in South Africa with marketing.

Production Capacity: 11700 MT per month
Export Products: Frozen meat, Canned beef and beef by products
Export Market: South Africa & EU
Location: Lobatse, Maun & Francistown
Contacts: +267 5331232
 tgmodise@bmc.bw
 www.bmc.bw



Bio:

Located in Gabane, Botswana and incorporated in 2014, DLG-BW is a producer of fairly traded, high quality, cold-pressed marula oil for the international cosmetic industry. Its sister company in the United States, DLG Naturals, Inc., sources natural, indigenous, and sustainable oils from the best producers in Southern African and supplies cosmetic manufacturers throughout the world.

Production Capacity: Morula Oil- 1400 kg's per month, Morula pulp-40 tonnes per month
Export Products: Organic oils
Export Market: USA
Location: Gabane & Gaborone, Botswana
Contacts: +267 7411 8639
 dr.georgia@dlgnaturals.com
 dlgnaturals-bw.com



**LOBATSE CANVAS
BOTSWANA CAP &
HELMET MFRS**

Bio:

Botswana Cap & Helmet experienced staff and technicians manufacture our products to a high standard of workmanship, using only top quality raw materials. We manufacture webbing equipment, military caps, berets, embodied badges and uniform accoutrements such as chevrons and epaulette. Our products are regularly supplied to many foreign governments, either directly or through our agents. specialises in the designing and manufacturing of uniform caps, military headwear, army gear, army clothing, helmets, webbing, embroidery, woollen berets and accoutrements as well as military equipment and accessories.

Production Capacity: Over 5000 units per month
Export Products: Military gear and canvas equipment
Location: Lobatse
Contacts: +267 5330298
 makobocancaps@btcmil.co.bw
 www.botswanacap.com

**Bio:**

From its humble beginnings in 1978, the BVI of today is a company that has grown in leaps and bounds but has not swayed from its founding strategic objectives of firstly ensuring that beef trade in Botswana continues (Botswana Beef is still being exported to the European Union) through control of strategic transboundary animal diseases as well as diseases of public health concern.

Through strict adherence to international vaccine standards (OIE), having in place a sound Quality management systems and customer-centric approach today two thirds of all vaccines produced at BVI are exported annually to over 15 countries in Africa and the Middle East. Many of these countries use BVI have been using BVI vaccines for their National annual disease control programs for decades. BVI today has an expanded mandate that now makes it a National, Regional and Global player providing sustainable animal health solutions. BVI is proud to be leading the fight in unlocking Africa's vast livestock potential by preventing livestock diseases that have for many a year hampered growth of this sector.

Production Capacity: Very high capacity
Export Products: Manufacture & distribution of livestock vaccines
Export Market: Malawi, Mauritius, Zambia, South Africa & Tanzania
Location: Gaborone, Botswana
Contacts: +267 3912711
 mmazwiduma@bvi.co.bw
 www.bvi.co.bw



Foamex Industries (Pty) Ltd

Bio:

Foamex Industries is a privately owned domestic company that began its operations in 1996. The company currently has 108 employees. The company applies foam on the following areas: bedding, protective packaging and in construction.

Production Capacity: 60 tonnes per month
Export Products: Polyethylene foam products
Export Market: South Africa
Location: Gaborone
Contacts: +267 3957398
 foamex@botsnet.bw
 www.foamex.co.bw

**Bio:**

F&G Botswana (Pty) Ltd. was incorporated in 2007. It imports raw materials from countries including ZIM, USA, Brazil and South Africa, extracts and then markets its finished products (flavours and fragrances for foods and daily chemicals).

Production Capacity: 300 tonnes of fragrances and Flavors per year
Export Products: Flavor and Fragrance products
Location: Francistown
Contacts: +267 2416587
 fng@hbglobal.com
 www.fngff.com





Ebony Botswana (Proprietary)Limited

Bio:

Ebony Botswana is a 100% foreign owned company that began its operations in 2000. The company currently employs 450 people. It is located in Tlokweng Selokwane.

Production Capacity: 1.3 million pieces per month
Export Products: Hair pieces
Location: Gaborone, Botswana
Contacts: +267 3181106
 hnb daddy@yahoo.com
 superpa3nm@gmail.com



Donkey Milk Industries Proprietary Limited

Bio:

The company was formed in 2016 to produce Donkey Milk products including liquid milk, Donkey Milk Cosmetics i.e soap, lotions and supplements for non-communicable diseases. The company currently Produces and sales: Raw Milk, Bath Soap, Lotion, Face Wash, Face Scrub, Face Ointment.

Production Capacity: 500 products per day
Export Products: Donkey milk products
Location: Gaborone, Botswana
Contacts: +267 74569774
 johannes@secretkalahari.com
 auroten@gmail.com

**Bio:**

Dulux Botswana is a foreign owned company that began its operations in 1976. The company currently employs more than 30,000 people worldwide. Dulux Botswana has a manufacturing plant in Gaborone and distributes from Gaborone and Francistown distribution centres. Dulux specializes in the manufacture of pigments, extenders, binders and solvent additives.

Production Capacity: Over 100 000 litres per month
Export Products: Paint Manufacturer
Location: Gaborone & Francistown
Contacts: +267 3951011/ +267 241 3685
 DuluxBots.Sales@akzonobel.com
 www.dulux.co.za/

**Bio:**

Kwena Concrete Products is located in Gaborone, Botswana and is part of the Cement & Concrete Product Manufacturing Industry. The company generates \$41.05 million in sales (USD).

Production Capacity: over 5000 pavers, 100 000 bricks, 50 000 railway blocks – per month
Export Products: Manufacture of Concrete Products
Location: Gaborone, Botswana
Contacts: +267 3922350/39222840
 bkenosi@info.bw
 www.kwena.co.bw

**Bio:**

Kgalagadi Breweries(Pty) Ltd is located in Gaborone, Botswana and is part of the Soft Drink Manufacturing Industry. The company also manufactures and distributes beer, lager and traditional African beverages.

Export Services: Manufacturers and distributors of beer, lager and traditional African beverages
Location: Gaborone & Francistown
Contacts: +267 3953619

**Bio:**

Krocovango Crocodile Farm is a huge crocodile haven with over 10 000 Nile crocodiles at any given time, between 4000-5000 crocodiles eggs are bred each year.

Production Capacity: 4000-5000 crocodile eggs are bred each year
Export Services: Crocodile Breeding
Location: Sehithwa- Shakawe
Contacts: +267 72306200
 willeroxl@gmail.com



Genpack

Bio:

Started in 1980, General Packaging Industries (Pty) Ltd. is the leading manufacturer and supplier of packaging material in Botswana. Located in Gaborone, the capital city and operate out of two manufacturing facilities, which specialize in paper and plastic products respectively. Their main location is centrally situated in the city's industrial area, and houses a fully integrated plant that services a wide range of industries such as meat, dairy, poultry, beverages and agriculture. While their main line of business is the manufacturing of corrugated boxes and plastic material, the company also assist customers in designing custom packaging solutions and supply packaging accessories.

Production Capacity: Over 100 000 units per month
Export Products: Corrugated boxes, plastic bags, shrink film, stretch film & packaging accessories
Location: Gaborone, Botswana
Contacts: +267 3912908
 ravi@genpakbotswana.com
 genpackbotswana.com



Gopesha (Pty) Ltd

Bio:

Gopesha (PTY) Ltd is a Botswana registered company which has been operating in Gaborone since 2007. It houses the latest up-to-date machinery, tooling and equipment. It employs a 100 local staff that all play a role in the day-to-day operations. Product range varies from standard domestic kitchen units, commercial fitted kitchen units, lockers, stationary cabinets, bolted shelving and catering tables.

Production Capacity: 500 x 3 piece units per month, 400 fitted Kitchen units per month, 1000 Lockers per month
Export Products: Steel kitchen units, catering tables & steel trunks, steel furniture (lockers, stationery cabinets, bolted shelving)
Location: Gaborone, Botswana
Contacts: +267 3165397
 louis@gopesha.co.bw

**Bio:**

Leseding Interiors (Pty) Ltd was incorporated and registered in 2001 Reg. No. CO. 2001/1998. The Company started its operation in the very year it was registered, with the aim of providing Botswana with state of the art in interior & exteriors fittings and fixings. The company's main objective is to form partnerships with its clients and provide solutions to them. We achieve this by using the clients key inputs and doing all the necessary sourcing and execution.

Production Capacity: 5000 units per month
Export Products: Aluminum Doors, windows, skylights
Export Market: Zambia
Location: Gaborone
Contacts: +267 72100282
 info@lesedinginteriors.co.bw
 www.lesedinginteriors.co.bw

**Bio:**

Lobatse Clay Works started operations at its manufacturing plant in Lobatse, 70 kilometres south of Gaborone in 1992. Situated in the valleys of the Woodhall hills, Lobatse Clay Works produces in excess of 30 million units per year and has been a major partner in building Botswana's infrastructure. LCW's quality clay products make up the face of Botswana's buildings including office complexes, town houses, universities, schools, hospitals, institutional houses, government houses as well as private residential housing.

Production Capacity: 30 million units annually
Export Services: Manufacturing clay products
Location: Lobatse
Contacts: +267 5332447
 buzwani@lcw.co.bw
 www.lcw.co.bw



MORINGA TECHNOLOGY INDUSTRY

Bio:

Moringa Technology Industry was registered in 2014, the company is currently producing Moringa tea, juice, powder and tablets among others. Moringa is a plant that is often called the drumstick tree, the miracle tree, the ben oil tree, or the horseradish tree. Moringa has been used for centuries due to its medicinal properties and health benefits. It also has antifungal, antiviral, antidepressant, and anti-inflammatory properties.

Production Capacity: 2000 Boxes of tea bags, 500 moringa nuts, 300 boxes of moringa powder, 100 bags of moringa pasta, Per month

Export Products: Moringa powder, tea, capsules and pellets

Location: Gaborone, Botswana

Contacts: +267 71302355/76666661
moringabw@yahoo.com



KWENA ROCLA

Bio:

Kwena Rocla (Pty) Ltd is Southern Africa's leading manufacturer of pre-cast concrete products for infrastructure, including pipes, culverts, manholes, poles and various other related products. **Mission-To Enhance Quality of Life through Engineered Precast Infrastructural Products. Vision-To be the Number 1 Precast Concrete Infrastructural Product Specialist in Southern Africa.**

Production Capacity: Concrete- 68 000 tons per year

Export Products: Concrete and Pre-cast Cement Products

Export Market: South Africa & Namibia

Location: Gaborone, Botswana

Contacts: +267 3904 032
mbuya@kwenarocla.com
www.kwenarocla.co.bw

**Bio:**

O3 Beverages is Botswana's first door to door delivery for bottled water. We are proud to be the leader in home and office water delivery services, and we would like to make it as easy as possible for you the consumer by delivering the bottle size that you require.

Production Capacity: 16,128,000 per year

Export Products: O3 bottled water & carbonated soft drinks

Location: Gaborone, Botswana

Contacts: +267 3180800
kagiso@o3beverages.com
o3beverages.co.bw

deserve
purest




First Polymers Botswana T/A Sunita Cables (Pty) Ltd

Bio:

Sunita Cables is the biggest manufacturers of coppers wires and cables in the whole of Botswana and had been the leaders in copper wires and cables manufacturing for past 20 years, supplying not just in Botswana but Zambia, Namibia and South Africa. The company has the facility to produce various advance industrial based products on specially developed technology. They can also customize their product according to users specific needs. Its management is from the elitest engineering colleges with decades of international experience in heavy machinery and plant manufacturing. They are a multinational company with operations in the whole of southern continent of Africa.

Production Capacity: Over 10 000 per week

Export Products: Manufacturing Cables

Location: Gaborone, Botswana

Contacts: +267 3915922
sunitacables@btcmil.co.bw
www.sunitacables.com



FLO-TEK®

Flow better with us

Bio:

The Flo-Tek group was established in the year 1998 in Botswana. It has evolved to become one of the leading and respected brands in the manufacturing of PVC, CPVC & HDPE Pipes and Fittings, Rotomolded Products and Packaging Materials in Southern Africa. Our ever growing network now has operations in Botswana, South Africa, Angola, Namibia and Zambia. Flo-Tek is a preferred manufacturer of choice, offering an array of quality certified products across industries.

Export Products: PVC pipes, HDPE pipes & water storage tanks
Export Markets: South Africa, Angola, Namibia & Zambia
Location: Lobatse, Ramotswa & Gaborone, Botswana
Contacts: +267 5332180
jinu@flotek.co.bw
www.flotekafrika.com

Kalahari Canvas

Bio:

Kalahari canvas is a privately owned foreign company that began its operations in 1985. The company currently employs 27 people. Situated in Plot D264 Mathiba Road Maun, the company specializes in design, customize and supply tents, camping equipment, luggage, metal work, upholstery, accessories and much more.

Production Capacity: 2000 units per month
Export Products: Tents, safari equipment
Export Markets: USA Italy
Location: Maun & Kasane, Botswana
Contacts: +267 6860568
ops@kalahari-kanvas.com
www.kalahari-kanvas.com



Kalahari

FLOOR TILES (Pty) Ltd

Bio:

Kalahari Floor Tiles was incorporated in 1988 with its core activities being the manufacturing of Vinyl Floor Tiles. The company is the sole manufacturer of vinyl floor tiles in Botswana with an installed capacity of one million square metres per annum.

Production Capacity: 5000 units per month
Export Products: Aluminum Doors, windows, skylights
Export Market: Zambia
Location: Gaborone, Botswana
Contacts: +267 72100282
info@lesedinginteriors.co.bw
www.lesedinginteriors.co.bw

Kgalagadi Plastics Industries

Bio:

Kgalagadi Plastics Industries (Pty) Ltd manufactures flexible packaging used by a wide range of customers including amongst others those in the food production, supermarkets, banking and beverages industries. We also export to other countries in the region. Mission-Kgalagadi Plastics Industries mission is to exceed our customer's expectation on both service and quality in the supply of flexible plastic packaging. We will achieve our mission through the use of innovative and profitable methods. Vision-We intend to be the preferred supplier of plastic flexible packaging in the Subcontinent of Africa.

Production Capacity: 300 tonnes per month
Export Products: Manufacturing plastics
Location: Gaborone, Botswana
Contacts: +267 3914182
sales@kpiplastics.com
www.kpiplastics.com



**Bio:**

Makoro is a clay brick and roto-moulding Company established in 1987 and located near Palapye. The company produces high quality clay face bricks and water storage solutions. Their clay brick range is a reminder of the quality produce and their water storage solutions range from vertical tanks, horizontal tanks, septic tanks, slim line tanks and drums.

Production Capacity: 3.5 million bricks per month
Export Products: Bricks and PVC Tanks Products
Export Markets: South Africa & Namibia
Location: Palapye & Gaborone, Botswana
Contacts: +267 4920626
 nigel@makoro.co.bw
 www.makoro.co.bw

Mabeo Furniture

Bio:

Mabeo is furniture and accessories brand from Botswana, Africa. Mabeo launched its products internationally in 2006 after 10 years of making bespoke furniture for commercial projects locally and has engaged the design world consistently since then, collaborating with some of the best designers on significant projects and developing a growing collection of products.

Production Capacity: 1000 units per month.
Export Products: Furniture Manufacturing
Export Markets: Namibia & South Africa
Location: Gaborone, Francistown & Palapye
Contacts: +267 3908736
 peter@mabeofurniture.com
 www.mabeofurniture.com

Rhino Steel Rolling Mills (Pty) Ltd

Bio:

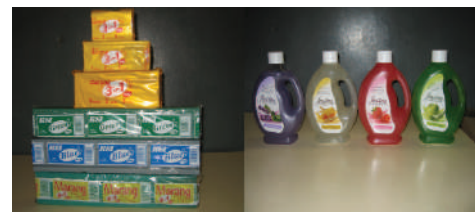
Rhino Steel Rolling Mills (Pty) Ltd comprising of 5 ton induction furnace and steel rolling mill. The company diversified into other branches of steel manufacturing and set up a forging and fabrication division in 2005. Reliance manufactures parts such as Steel sweeps and shearing blades for agriculture implements industry and has a reasonably big market share in South African market. Company has commissioned Steel Ingot manufacturing unit in December 2009 and Steel Rolling mill in January 2010. Steel ingot mould have already been casted in Palapye foundry. Reliance is rerolling Round bars , Square bars , Flat Irons , Fencing Standards and angle Irons of various sizes and specifications at Ramotswa.

Production Capacity: 5 tonnes per week
Export Products: Steel Plant
Location: Gaborone, Botswana
Contacts: +267 75380701

**Bio:**

Kgalagadi Soap Industries started operating in Botswana in 1985. The company currently employs 42 people. It manufactures soap. It has an approximate industry share of about 60%.

Production Capacity: 500 000 soap bars per month
Export Products: Multipurpose bar soap
Location: Gaborone, Botswana
Contacts: +267 71321434
 tim@ksi.co.bw





Kemtek (Pty) Ltd

Bio:

Kemtek is a privately owned domestic company that began its operations in 1991. The company is situated in Francistown and manufactures skin care products, hair care and perfumes.

Production Capacity: Over 200 000 kg per annum
Export Products: Skin care products, Hair care and Perfumes
Location: Francistown, Botswana
Contacts: +267 2413584
jbvenkatesh@kemtek.net



Mushtaq Plastics (Proprietary) Limited

Bio:

Mushtaq Plastics is a 100% foreign owned company which started its operations in 1998. Must plastics manufactures plastic cutlery, carry and refuse bags.

Production Capacity: Carry Bags- 350 tonnes per annum, Refuse Bags- 800 tonnes per annum, Cutlery- 8 tonnes per annum
Export Products: Carry bags, refuse bags and Plastic cutlery
Export Market: South Africa
Location: Gaborone, Botswana
Contacts: +267 72806663
mplastic@info.bw



Organic Fertlizer Manufacturing

Bio:

OFMB was registered on the 15th July 2011. It is a joint venture company formed with Botswana and International shareholders as a result of Mike Hallam's vision to utilize locally produced animal waste products primarily from Beef Feedlots. OFMB has invested in and installed a state of the art blending and bagging plant with a capacity of 60,000 tons per annum. OFMB has also installed a packing and sealing plant primarily for its organic products with a capacity of 20,000 tons per annum. A fertilizer granulation plant has been installed and its capacity is 30,000 tons per annum. OFMB is currently supplying Botswana and surrounding countries such as Zambia, DRC and Zimbabwe with Organic and organically blended fertilizer in a granulated form that is easily applied by farmers through their planters or fertilizer spreaders. The company is able to supply Organic or any Organically enhanced fertilizer required for a particular crop, soil or basic environment.

Production Capacity: Blending and Bagging plant - 60,000 tons per annum, A fertilizer granulation plant with a capacity of 30,000 tons per annum
Export Products: Organic Fertilizers
Export Market: DRC, Zambia & Zimbabwe
Location: Gaborone, Botswana
Contacts: +267 3939368/ 76065264
organicfmb@gmail.com
organicfmb.com



Bio:

Manufacturers of flexible packaging used by a wide range of customers including amongst others those in the food production, supermarkets, banking and beverages industries.

Production Capacity: Carry Bags- 350 tonnes per annum, Refuse Bags- 800 tonnes per annum, Cutlery- 8 tonnes per annum
Export Products: Carry bags, refuse bags and Plastic cutlery
Export Market: South Africa
Location: Gaborone, Botswana
Contacts: +267 72806663
mplastic@info.bw



Portfolio Pharmaceuticals Botswana

Bio:

Portfolio Laboratories (Botswana) (Pty) Ltd. is engaged in the packing of pharmaceutical products. The plant is located in Phakalane, Gaborone. Ours was the first DRU approved operational plant in Botswana. The plant conforms to ISO and WHO guidelines with total built-up area of 2,000 m2. We have more than 70 products registered in Botswana spread across many therapeutic segments.

Production Capacity: 500 000 units per month
Export Products: Pharmaceuticals
Export Market: South Africa
Location: Phakalane, Botswana
Contacts: +267 3932295
 operations@portpharm.co.bw
 www.portfoliopharma.com

Power Engineering

Bio:

Power Engineering is a company established in 2010 and manufactures of Cables, Telecom cables, copper rod.

Production Capacity: Copper-200 tonnes per month, Aluminium 150 tonnes per month
Export Products: Low Voltage and High Voltage cables, PVC, XLPE, PE Armoured and Unarmoured (available with ant-theft systems), General purpose and panel wire, ACSR, AAAC, conductors, ABC and Concentric Service cable, Communication and control cables
Location: Gaborone Botswana
Contacts: +267 3912611
 tr.naik@panafrica.co.bw



Bio:

The company is committed to creating high quality wholesome foods. Their products are processed meat, beef.

Production Capacity: 4800 tonnes of processed meat per year, 7200 tonnes of fresh meat per year, 1200 tonnes of chicken per year.
Export Products: Processed Meat
Location: Tlokweng, Botswana
Contacts: +267 3928637
 keromile@dbh.co.bw
 www.sennfoods.com



Bio:

Reliance Foundries was established in the year 1987 in Palapye. Mr. Kapur arrived to attend a trade fair and decided to set up an industry in Botswana. The first foundry was established in Palapye, a small town, about 275 Km from the Capital Gaborone. The foundry started at a small scale with the help of 20 local workers and it grew with market demand and forces and now employs nearly 400 workers. Foundry in Palapye uses Coke as energy, to melt cast iron at a temperature of 1100 degrees Celsius. The company set up a second foundry at Ramotswa, about 22 Km from Gaborone. The steel is melted in Electric Induction Furnace to manufacture Cast Iron, SG Iron castings according to customer's requirements. This foundry is semi automatic and most suitable for mass production.

Production Capacity: Over 5 tonnes per week
Export Products: Manhole and pipe fittings, agricultural wear parts and window frames
Location: Ramotswa Palapye South Africa
Contacts: +267 5380701
 kapur@info.bw/reliance@info.bw
 www.reliancefoundries.com



Red lotus (Pty) Ltd
Hides and skins T/a Matlalo

Bio:

Red Lotus (Pvt) Ltd is a dynamic hide, skin, wool and leather company offering services and products globally to our vast array of international clients. Established in 2013, this well established and reputable company has ensured that quality products are supplied at competitive prices to valued customers around the world.

Export Products: Hides and skins
Location: Mochudi, Botswana
Contacts: +267 75904458
www.redlotusltd.com



Seven Star Steel Pipe Group (Proprietary) Limited

Bio:

Seven Star is a privately owned domestic company that began its operations in 2012. Situated in Palapye, in the central district, the company manufactures steel pipes. The steel pipes can be used for water, oil, steam or gas.

Production Capacity: 20 x 18m pipes per day
Export Products: Steel pipes
Location: Palapye, Botswana
Contacts: +267 4920639 / 72781144
yukeongwong@gmail.com



Solarmatics Botswana PTY LTD

Bio:

Solarmatics Botswana is a privately owned domestic company that began its operations in 2000. The company currently employs 12 people. Situated in Francistown, the company manufactures solar water heaters and Photovoltaic system.

Production Capacity: 35 units per week
Export Products: Solar water heater
Location: Francistown Botswana
Contacts: +267 2417836
mercymmpi@yahoo.com

**Bio:**

Emerald Soft Gold has a Southern and East African footprint with manufacturing plants in Kigali, Rwanda and Gaborone, Botswana. Our products are distributed via our Rwandan distribution hub to Congo, Burundi, Uganda, Kenya and Tanzania in East Africa. Our Botswana factory distributes our products in South Africa, Zimbabwe, Namibia, Zambia, Malawi, Mozambique, Lesotho and Swaziland in the SADC region. Our main market is focused on the Southern and East African Black Woman. Our product range is wide and caters to those who can afford the most luxurious hair pieces, those looking for quality budget products and to all those in between

Production Capacity: 7000 hair pieces per day
Export Products: Hair pieces
Export Market: South Africa
Location: Tlokweng, Botswana
Contacts: +267 393 6546
sameer@softgold.co.za
www.softgold.co.za

**Bio:**

Manufacture and distribution of fruit juices, squashes and concentrates.

Production Capacity: \$4.41 million per annum
Export Products: Processed Meat
Location: Francistown, Botswana
Contacts: +267 2413446
 tropft@botsnet.bw

Strict Investments (Proprietary) Limited

Bio:

Strict investments is a privately owned domestic company that began its operations in 2008. Strict Investments is situated in Francistown, in Dumela industrial area. The company packages salt.

Production Capacity: 20kg of salt per day
Export Products: Salt Packaging
Location: Tati, Francistown, Botswana
Contacts: +267 71309147 / 2417629
 bogamandandi@yahoo.com

Wild Marula Oil Proprietary Limited

Bio:

Natural Marula Oil extracted from truly organic wild growing Marula Tree fruit through a process of Cold Compression to manufacture superior quality carrier oil used in the Cosmetic Industry.

Production Capacity: 12 tonnes per year
Export Products: Morula oils
Location: Selibe Phikwe, Botswana
Contacts: +267 2622016
 info@wildmarulaoil.com
 www.wildmarulaoil.com

**Bio:**

ZISMO Engineering was established in May 2001 as an Electrical Engineering, Contracting, Automation and Refurbishment Company.

Production Capacity: Over 5000 units per year
Export Products: Electrical Transformers
Export Market: Zambia
Location: Gaborone, Botswana
Contacts: +267 3932711
 sales@zismoengineering.com
 zismoengineering.com

Bio:

The bulb world products are compatible with a wide range of fixtures through foreign brands, Specialize in manufacture energy saving lamps (LED Lamps). Currently with a total of 65 employees.

Export Products: LED Lights
Location: Selibe Phikwe, Botswana
Contacts: +267 3115400
 info@thebulbworld.co.bw

Bio:

UV Botswana (Pty) Ltd is a 100% Botswana owned Company, which was established in 2009, to design and manufacture robust, reliable, and cost effective underground utility vehicles for the mining and quarrying industry. Set up in Francistown, in the North East of the country, the Company is ideally situated geographically, to service the Southern and Central African region.

Export Products: Specialized Vehicles
Location: Francistown, Botswana
Contacts: +267 2419922
 info@uvbotswana.co.bw



B&M Garments

Bio:

B&M Garments is a privately foreign owned company that began its operation in 2000. The company currently employs 200 people. Situated in Shashe, near Francistown, the company manufactures T-Shirts, Golf Shirt , Vest , Short , Pants for Ladies , Mens and Kids & Sport wear.

Production Capacity: 900 000 per annum
Export Products: Textiles / apparels
Location: Shashe , Botswana
Contacts: +267 2484205 / 71310529
 Krishna@bnmgarm.co.bw



Dinesh Textiles (Pty) Ltd

Bio:

Dinesh Textiles started operation in 1999 and currently employs 245 people. Dinesh is a privately owned manufacturer specializing in bottoms, protective clothing and corporate wear. Currently operating from Selebi Phikwe. The company is a BOS ISO 9001:2008 certified organization and the company has also achieved BOS 455 certification for supply of protective clothing into the mining sector. The company is export ready with a history of exporting to the USA under the AGOA program.

Production Capacity: 120,000 units per month
Export Products: Protective Clothing , Corporate wear and T-shirts
Location: Gaborone & Selebi Phikwe, Botswana
Contacts: +267 3905996
 lionel.tkg@gmail.com
 www.dineshtextiles.com

**Bio:**

Established in 2003 to service the linen needs of the hospitality industry in Botswana, Contemporary Linens is a Manufacturing & Distribution Company focused on the supply of high quality and competitively priced Bed, Bath & Table Linens. The Company's experienced directors and staff come with a wealth of experience in the textile industry, and provide the foundation to service customers with the right products to suit their individual needs. The company markets and manufactures a variety of products aimed at the specific needs and requirements of our varied hospitality client base. Our extensive product range encompasses a variety of qualities, styles, textures, colours and innovations for aesthetic and functional purposes.

Above all, we endeavour to secure customer satisfaction through our Quality of Product, Service and Reliability. The success of the Company, in its relatively short history, can be attributed to the personal service and the desire to go the extra mile by its well equipped team. Having captured a significant share of the market with Botswana's leading Hotels and Lodges, our distinguished reputation amongst our valued clients, is well established.

Production Capacity: 30 000- 40 000 units per month (P300 000 revenue per month)
Export Products: Bed & bath linen, tabling
Export Market: Zambia, Namibia & South Africa
Location: Gaborone, Botswana
Contacts: +267 3953265
 contemporary@info.bw
 www.contemporarylinens.co.bw



GLAM COLLECTIONS

We are proudly Botswana's home lifestyle manufacturers known for elegance and original textiles.

Products: Duvet Covers
Sheets
Bed Accessories
Scatter Cushions

Location: Gaborone, Botswana

Contacts: +267 3184915
info@glamcollections.co.bw
www.glamcollections.co.bw

 [glam.bedding](https://www.facebook.com/glam.bedding)

WA Western Apparels GARMENT MANUFACTURERS

Bio:
Western Apparels is a 100% citizen owned company incorporated in the year 1999 and commencing production in July 2001. We manufacture and supply all types of apparel, including but not limited to; personal protective equipment (PPE), uniform suits, ceremonial suits, shirts, blouses, trousers, slacks, skirts, track suits, caps & hats, t-shirts, golf shirts, shorts, men's vests, ladies tops, ladies/gents undergarments and ladies/gents fashion garments. Our company has four clothing production lines (each consisting of twenty-four sewing machines) and are fully equipped to produce garments in a large quantity. We have specifically set-up a unit with all the necessary machinery and equipment required for the manufacturing of ceremonial jackets, suits, jackets, trousers, slacks and skirts. We also have an in-house screen printing and embroidery department which we use to brand our products as per our clients needs. We are also re-sellers for BBF Safety Shoes and soul distributors in Botswana for Brother (Sewing Machine Range).

Production Capacity: 5000 garments per month (Varies due to orders)

Export Products: Textiles

Location: Gaborone, Botswana

Contacts: +267 3902474
sales@western.co.bw
www.westernapparels.com

 [@waapparels](https://www.facebook.com/waapparels)



Bio:
Nortex is a privately owned domestic that began its operations in 1990. The company currently employs 480 people. Situated in Francistown the company manufactures exquisitely designed towel products and offers a broad range of terry towels, napkins, beach towels.

Production Capacity: 1200 MT per year

Export Products: Towel Products, abroad range of Terry Towels, napkins and Beach Towels

Export Market: South Africa

Location: Francistown, Botswana

Contacts: +267 2414773
info@nortex.co.bw
www.nortex.co.za

 [Nortex-Towels](https://www.facebook.com/Nortex-Towels)

Premier Clothing (Proprietary) Limited

Bio:
Premier Clothing (Pty) Ltd. is the leading manufacturer of uniforms and protective clothing in Botswana.

Production Capacity: 25,000 - 40,000 pcs per months

Export Products: Textiles

Location: Gaborone, Botswana

Contacts: +267 3953324
premier@premierclothing.co.bw
www.premier.co.bw

07

Mining

PROFILES:

- **DEBSWANA**
- **KHOEMACAU COPPER MINING**
- **MUPANE GOLD MINE**
- **BOTSWANA ASH**
- **MINERY COAL**
- **MORUPULE COAL MINE**
- **MOOLMAN MINING BOTSWANA**



DEBSWANA


Bio:

Debswana Diamond Company was established in 1969 and it is owned in equal shares by the Government of the Republic of Botswana and The De Beers Group of Companies. It is one of the world's leading diamond producers by value and volume. Debswana operates four diamond mines in Orapa, Letlhakane, Damtshaa and Jwaneng.

Debswana is a major contributor to the national economy of Botswana – contributing significantly to the gross domestic product, foreign exchange earnings and government revenue. Debswana is also the biggest contributor to the De Beers Group rough diamond production.

The company is committed to mining safely, optimally and responsibly, as well as making a meaningful contribution to the development of communities around its mines and the nation at large, thus leaving a lasting legacy.

Export Product: Diamonds
Location: Jwaneng, Letlhakane, Orapa & Damtshaa
Contacts: +267 361 4200
CorporateAffairs@debswana.bw
www.debswana.com




KHOEMACAU COPPER MINING

Bio:

The Khoemacau flagship +60ktpa copper and +2Mozpa silver metal Starter Project involves the development of the Zone 5 underground mine and associated infrastructure, and the upgrade and expansion of the existing Boseto processing plant.

The Zone 5 deposit currently has a 22-year mine life, with a total mineral resource of 92Mt at 2.2% Cu and 22g/t Ag. This high grade deposit offers a 4.2km strike length and with average widths over 10m is ideally suited to modern, highly mechanised mining, delivering C1 cash costs over the life estimated at approximately \$1.30 per pound* of copper and \$1.75* per pound on an all-in sustaining basis.

Export Product: Copper
Location: Maun, Botswana
Contacts: +267 74 693 693 / 393 1006
www.khoemacau.com



Mupane Gold Mining (Pty) Ltd

Bio:

Galane Gold is an un-hedged gold producer and explorer with mining operations and exploration tenements in Botswana and South Africa.

Production Capacity: 908 kt per annum (Tonnes)
Export Product: Gold
Export Market: South Africa
Location: Francistown, Botswana
Contacts: +267 72442193
investors@galanegold.com
www.galanegold.com




Botswana Ash (Pty) Ltd

**Bio:**

Botswana Ash is joint venture between the government and foreign investors that began its operations in 2001. The company currently employs 432 people. Situated in Sua Pan, the company produces Dense Soda Ash, Light Soda Ash and Salt.

Production Capacity: 446,788 tonnes per year
Export Product: Dense and light Soda Ash, coarse and fine Salt, chemical Salt
Export Market: Zambia, DRC, Malawi & South Africa
Location: Francistown
Contacts: +267 6214321
marketing@botash.bw
www.botash.bw

**Bio:**

Minergy is the holding company of the Minergy Group and the development of the Masama Coal Mine represents the first step in our strategy of becoming a mid-tier southern African coal mining company. Minergy is a Botswana registered company listed on the main board of the BSE, with a proposed listing on a second, international stock exchange planned. Minergy's 100% owned Masama Mine, located in the Mmamabula Coalfield of Botswana, is the Group's cornerstone asset.

Production Capacity: 80,000 saleable tonnes per month
Export Product: Coal
Export Market: South Africa
Location: Gaborone, Botswana
Contacts: +267 71237936
 leutlwetse@minergycoal.com
 www.minergycoal.com

**Bio:**

The Morupule Coal Mine (MCM) is a coal mine located on the outskirts of Palapye, Botswana, along the Serowe-Palapye road. MCM started production in 1973 as an Anglo American Corporation subsidiary with the main objective being to supply coal to the then Bamangwato Concessions Limited mine (now BCL) and BPC power plant situated in Selebi Phikwe. In 2000 Debswana acquired MCM as its 100% owned subsidiary and it has since grown both in stature and production to be the dominant influence in the coal mining sector in the country

Production Capacity: 1 mtpa
Export Product: Coal
Location: Palapye
Contacts: +267 4920251
 communications@mcm.co.bw
 www.mcm.co.bw



Moolman Mining Botswana (PTY) LTD

Bio:

Moolmans (previously known as Aveng Mining) is a South African-based leader in contract mining operating across Africa. For more than 60 years Moolmans has provided specialised services to the mining industry that include open cut mining, shaft sinking and access development, and underground mining projects.

Export Services: Open cut mining, shaft sinking, Under ground mining
Export Market: South Africa & Australia
Location: Francistown, Botswana
Contacts: +267 71318747
 moolman@botsnet.bw
 www.moolmans.com

08

Mining Beneficiation



PROFILES:

- DTC BOTSWANA
- **ARJAV DIAMONDS BOTSWANA**
- AUROSTAR DIAMONDS
- **AGATE BOTSWANA**
- FINESTAR DIAMONDS
- **M SURESH BOTSWANA**
- DALUMI
- **DIACORE BOTSWANA**
- DHRUV MANUFACTURING
- **KGK DIAMONDS BOTSWANA**
- LUCARA DIAMONDS
- **SAFDICO BOTSWANA**
- STAR RAYS DIAMONDS BOTSWANA
- **LEO SCHACHTER BOTSWANA**
- YAELSTAR BOTSWANA
- **NAIA DIAMONDS**
- OKAVANGO DIAMOND COMPANY
- **PLUCZENIK BOTSWANA**
- PIOFINE
- **YERUSHALMI BROS DIAMONDS**
- 89 CARATSREET
- **TACHE DIAMONDS**
- ZEBRA DIAMONDS
- **BLUE STAR**




DTC Botswana

Bio:

Diamond Trading Company Botswana (DTC Botswana) is a 50/50 Joint Venture partnership between the Government of the Republic of Botswana and De Beers. It is the world's largest and most sophisticated rough diamond sorting and valuing operation, with a capacity to sort 45 million carats a year.

DTC Botswana aims to facilitate, drive and support the creation of a vibrant, sustainable and profitable downstream diamond industry in Botswana through superior sorting and valuing practices. The downstream activities will add additional value to the local diamond industry through cutting & polishing of diamonds and ultimately manufacturing of jewellery which will develop core competencies for adding higher value.

Export Product: Diamonds
Location: Gaborone, Botswana
Contacts: +267 364 9000
www.dtcbotswana.com




ARJAV DIAMONDS

Bio:

Arjav Diamonds is one of the world's leading diamond companies, active in three fields: rough distribution, polished manufacturing and polished marketing.

Production Capacity: 381.43 million dollars in sales
Export Services: Diamonds
Location: Gaborone, Botswana
Contacts: +267 397 1450
info@arjavidiamonds.com
gss.debeersgroup.com



Aurostar Diamonds

Bio:

Aurostar Diamonds Botswana combines the traditional diamond manufacturing techniques passed down through generations with the most advanced technology and places this skillset in the hands of the Botswana employees. Input from the distribution in our various markets is converted into a direct manufacturing flow from Botswana in order to maximise efficiency. Integrity and traceability of our polished product is hugely important to us that is why our factory is a certified Forevermark manufacturer.

Production Capacity: \$5.7 million dollars per annum
Export Services: Diamonds
Location: Gaborone, Botswana
Contacts: +267 3167364
arpanmehta@aurostargroup.com
www.gss.debeersgroup.com



Agate Botswana

**Bio:**

Agate Botswana is a jointly owned company that began its operations in 1992. Agate Botswana is situated in Pilane, in the Kgatleng district, and manufactures tumbled stones, half cut stone and slabs. These products are all produced from stones.

Production Capacity: 70 tonnes per year
Export Services: Polished semi precious stones
Location: Pilane Mochudi
Contacts: +267 3912432
agate@info.bw

Finestar Diamonds (Proprietary) Limited

Bio:

Finestar Diamond Proprietary Limited, Botswana is wholly owned subsidiary company of Finestar Jewellery & Diamonds Private Limited, India. Finestar India is Sightholder of De Beers Group of Companies.

Production Capacity: 1.00 Cts to 10 Carat plus size in all color and clarity

Export Product: Diamond Polishing and cutting

Location: Gaborone, Botswana

Contacts: +267 3110975
support@finestardiamonds.com
www.finestardiamonds.com

M Suresh Botswana (Proprietary) Limited

Bio:

M. Suresh is a leading rough diamond manufacturer, importer and exporter of cut and polished diamonds since 1968 and has modern state of the art machinery and processing capabilities.

Production Capacity: 1Rough- Diamonds from 3ct to 30ct, Core Polished Diamonds- 0.2ct to 2ct, D to J colour, VS2 to I1 clarity

Export Product: Diamond Polishing and cutting

Location: Gaborone, Botswana

Contacts: +267 3112504
gagan@msureshco.com
www.msureshco.com

Dalumi (Botswana) (Proprietary) Limited

Bio:

A leading player in the global diamond and jewellery industry, the Dalumi Group has earned a reputation as one of the diamond world's most trusted names. Established in 1960 by Asher Dalumi and run today by the second generation, the Dalumi Group is an international company with a worldwide distribution operation.

Production Capacity: +3 million dollars

Export Product: Diamonds

Location: Gaborone, Botswana

Contacts: Tel: +267
info@dalumi.com
www.dalumi.com



Diacore Botswana (Proprietary) Limited

Bio:

Diacore, a multinational company, has diversified interests in the diamond industry providing rough and polished diamonds to customers around the world.

Production Capacity: 5000 carats per month

Export Product: Diamonds

Location: Gaborone, Botswana

Contacts: +267 390 7649/ 390 7640
www.diacore.com





Dhruv Manufacturing Botswana PTY LTD

Bio:

Dhruv Manufacturing Botswana (DMB) is part of the Mohit Group of companies and represents our commitment to manufacturing diamonds in Botswana.

Production Capacity: 1.00 Cts to 10 Carats per week
Export Product: Diamonds
Location: Gaborone, Botswana
Contacts: +267 3117355
sanjay@dhruvbotswana.com
www.mohitdiamonds.com



Zebra Diamonds (Proprietary) Limited

Bio:

Zebra Diamonds (Pty) Ltd is located in Ark, Gaborone, Botswana and is part of the Cement & Concrete Product Manufacturing as well as Minerals, ground or treated Jewelry, precious Metal Industry.

Production Capacity: 5.61 million dollars per year
Export Product: Diamond Polishing and cutting
Location: Gaborone, Botswana
Contacts: +267 73932101
info@igcgroup.com
www.igcgroup.com



Kgk Diamonds Botswana Pty Ltd

Bio:

KGK DIAMONDS BOTSWANA PTY LTD is located in GABORONE, Botswana and is part of the Jewelry Manufacturing Industry.

Production Capacity: 6000 carats per month
Export Product: Diamond Cutting and processing
Location: Gaborone, Botswana
Contacts: Tel: +267 3112830
accounts@kgkbw.com

**Bio:**

Lucara Diamond Corp.'s 100 percent owned Karowe diamond mine, located in Botswana, has been in production since 2012 and is one of the world's foremost producers of large, high quality, Type IIA diamonds in excess of 10.8 carats, including the historic 1,758 carat Sewelô, the 1,109 carat Lesedi La Rona and the 813 carat Constellation which sold for a record US\$63.1 million.

Production Capacity: \$192.5 million as at 31/12/2019
Export Product: Diamond Polishing and cutting
Location: Gaborone & Letlhakane, Botswana
Contacts: +267 2909200
btamocho@lucarabotswana.co.bw
www.lucaradiamond.com



Safdico (Botswana) (Pty) Limited

Bio:

Safdico is one of the world's leading diamond manufacturing, trading and retail companies. Its expertise lies in large and rare gemstones. Through its partnership with Graff Diamonds, Safdico has purveyed some of the world's most famous diamonds.

Production Capacity: 3 million carats per year
Export Product: Diamond Polishing and cutting
Location: Gaborone, Botswana
Contacts: +267 3914614
safdico.botswana@safdico.com
www.safdico.com



Star Rays Diamonds Botswana PTY LTD

Bio:

Star Rays is a leading manufacturer and supplier of solitaire diamonds with a state-of-the-art manufacturing facility in Surat, India. Sophisticated back end systems help in servicing a wide range of customer needs. We offer comprehensive gemmological services and marketing support to help retailers achieve strong sales.

Production Capacity: 20 000 carats per year
Export Product: Diamonds
Location: Gaborone, Botswana
Contacts: +267 75185022
info@starraysbw.com



Leo Schachter Botswana (Pty) Ltd

Bio:

Schachter Botswana (Proprietary) Limited, is a diamond cutting and polishing company located in Molepolole, a large village near the capital city of Gaborone, which is now the center of De Beers' diamond sales business.

Production Capacity: Over \$500m per annum
Export Product: Diamond Polishing and cutting
Location: Molepolole, Botswana
Contacts: +267 592 0815
schachterdiamonds.com



Yaelstar Botswana PTY LTD

Bio:

Yaelstar is part of the J. B. and Brothers Group, which was established in 1973.

The Group, one of first solitaire pioneers in India, has a strong heritage in the innovative use of technology throughout its business. Its ability to develop technological solutions that address operational and customer-demand needs is a major growth driver. This strength cuts across all activities: from manufacturing to sales and order fulfilment.

Production Capacity: 0.30ct – 10.00ct + size
Export Product: Diamond Polishing and cutting
Location: Gaborone, Botswana
Contacts: +267
yaelstarbotswana@gmail.com
jbbrothers.com



Naia Diamonds (Pty) Ltd



Bio:

Deals in the buying and selling of Diamonds and other precious stones.

Export Product: The Buying and Selling of Rough Diamonds

Location: Gaborone, Botswana

Contacts: Tel: +267 3908822 / 72924261
benny@naiadiamonds.com



Bio:

Okavango Diamond Company (ODC), is a rough diamond marketing company that is wholly owned by the Botswana Government.

Production Capacity: Over \$500 million per annum

Export Services: Diamonds

Location: Gaborone, Orapa & Letlhakane

Contacts: Tel: +267 3992317
dennis@odc.co.bw
www.okavangoblue.com



Pluczenik (Botswana) (Proprietary) Limited

Bio:

Founded in 1948 by Isaac Pluczenik in South Africa, the company has been shaped by its pioneering achievements. Known as "The Prince of Capes" for his success in developing this category, Isaac had a talent for recognizing trends and pursuing opportunities. Rapid international development followed, first in Antwerp, then New York in 1960 and both Tokyo and Hong Kong in 1977. Growth continued in the 21st century, with offices and factories opening in China, Botswana, the Gulf and Namibia, further securing the foundations of a global corporation whose offices today span the globe. Pluczenik is active in all key markets across all consumer segments. Complete jewellery programs for majors through to sales of large rare diamonds to high net worth individuals. Bespoke jewellery designs to special diamond cuts.

Export Product: Diamond Polishing and cutting

Location: Gaborone, Botswana

Contacts: +267 392 2255

www.pluczenik.com



Piofine (Pty) Ltd

Bio:

Piofine (Pty) Ltd is a Botswana based Diamond processing Company, duly licensed by the Ministry of Minerals, Energy and Water Resources

Export Product: Processing Industrial Grade Diamonds into Mining Tools & other

Location: Otse, Botswana

Contacts: Tel: +267 5337547
diamonds@it.bw
www.industrial-diamonds.com



Yerushalmi Bros Diamonds (Botswana) PTY LTD

Bio:

With a worldwide marketing network, a large variety of polished diamonds and cutting edge manufacturing facility in Botswana, Yerushalmi can guarantee personal and top quality services. Our innovative team has successfully launched two jewellery brands in the USA (Nattie K) and China (Amorosso), offering our clients unique insight and branding experience.

Production Capacity: 50 million dollar per year
Export Product: Diamond Polishing and cutting
Location: Gaborone, Botswana
Contacts: +267 392 2255
info@yerushalmi.com
www.yerushalmi.com

89 Caratstreet

**Bio:**

Jewellery manufacturing business. Specialising in hand made creations, custom design, jewellery repairs, restorations and remodeling.

Production Capacity: 10 pieces per week
Export Product: Diamond cutting and polishing
Location: Selibe Phikwe & Gaborone
Contacts: Tel: +267 73098768 / 74177151
89caratstreet@gmail.com

Tache Diamonds Botswana PTY LTD

Bio:

With a worldwide marketing network, a large variety of polished diamonds and cutting edge manufacturing facility in Botswana, Yerushalmi can guarantee personal and top quality services. Our innovative team has successfully launched two jewellery brands in the USA (Nattie K) and China (Amorosso), offering our clients unique insight and branding experience.

Export Product: Diamonds
Location: Gaborone, Botswana
Contacts: +267

**Bio:**

As a manufacturer and distributor of pointers to 10ct polished diamonds globally, quality is everything. Our craftsmen combine both traditional and modern methods and techniques to produce the finest polished diamonds. Our experience combined with innovative R&D puts us in the vanguard of bespoke manufacturing with an extensive portfolio of special and proprietary cuts.

Production Capacity: 4.16 million per year
Export Product: Diamond Polishing
Location: Gaborone, Botswana
Contacts: Tel: +267 3167364
manthan@bluestardiamonds.com



09

Transport & Cargo Logistics

PROFILES:

- GABCON
- TSWANA FUEL



GABCON

Gaborone Container Terminal

Bio:

Gaborone Container Terminal (PTY) LTD (GABCON) is an internationally recognised Dry port/Container terminal operating in Gaborone. As a dry port, GABCON is an extension of the Sea port and therefore receives/handles all containerised cargo destined to Botswana and the SADC region via Sea and Rail, which is the most economic/cost effective, safe and environmentally friendly way to transport goods. GABCON, the provider of container handling facility and delivery services, is a joint venture between Botswana Railways and Transnet wherein both parties' rail infrastructure facilitates container movement from South African Sea and Dry Ports across the world.

Production Capacity: 1600 containers per month

Export Services: Dry port operator

Location: Gaborone, Botswana

Contacts: +267 3164323
modirin@gabcon.co.bw



GaboroneContainerTerminal



Bio:

A Dry Port in Namibia, wholly owned subsidiary of Botswana Railways that operates a dry port facility leased from Namport. The dry port is located adjacent to Namport in Walvis Bay on the western coast of Southern Africa. The location enables the port to capture a large portion of SADC imports and exports that originate from, or are destined for the European market. Commodities that are imported or exported from Botswana through the west coast will therefore form a large percentage of the potential Sea Rail dry port market.

Export Services: Container Handling
Bonded Facilities & Storage
Freight Forwarding
Customs Clearing
Packing & Unpacking Containers
Cartage
Reefer Plug-in Points

Location: Walvis Bay, Namibia

Contacts: +264 81 145 4581
info@searail.com.na
www.searail.com.na

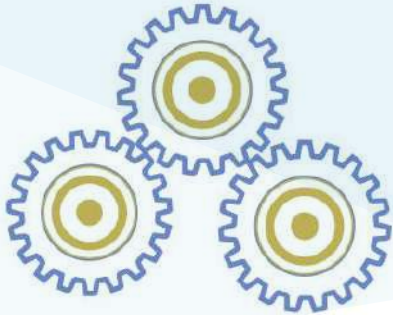


10

**ABOUT MINISTRY OF
INVESTMENT, TRADE &
INDUSTRY**



ABOUT MINISTRY OF INVESTMENT, TRADE & INDUSTRY



MINISTRY OF INVESTMENT, TRADE AND INDUSTRY BOTSWANA

The Ministry of Investment, Trade and Industry's mandate is to create a conducive environment for the promotion of Investment and development of Sustainable Industries and Trade, with a view to diversifying and growing the economy, creating wealth and employment, so that there is prosperity for all.

In line with this Mandate, the Ministry has to achieve the following high level deliverables:

- Creation of Sustainable Industries and Trade;
- Economic Diversification:
 - o Export development;
 - o Foreign Direct Investment (FDI); and
- Expansions and Domestic Investment.
- Wealth and Employment Creation;
- Citizen Economic Empowerment;
- Entrepreneurship Development;
- Poverty Eradication; and
- Facilitating Investment through ease of doing business

Departments

Department of Co-operative Development (DCD):

Promotes formation and registration of Co-operative business enterprises through education, training and advising co-operatives

on matters relating to Co-operative management in order to ensure profitable and sustainable enterprises for a growing and diversified economy.

Department of Trade and Consumer Affairs (DTCA):

Promotes the growth and development of internal trade, fair business practices, as well as consumer protection and welfare through implementation of policies and legislation in order to contribute to the economic growth of Botswana.

Department of Industrial Affairs (DIA):

Promotes the development of industry through formulation and review of policies and legislation aimed at stimulating investment, sustainable industries and economic growth and diversification.

Department of International Trade (DIT):

Promotes trade development and creation of market access through bilateral, regional and multilateral trade agreements/ treaties a view to; Industrial development; economic diversification; export-led growth and economic integration.

Research and Policy Development Unit (RPDU):

Conducts economic policy research as well as formulates and support implementation, monitoring and evaluation of economic policies and strategies to contribute to sustainable and diversified economy.

Doing Business Unit (DBU):

Coordinates and facilitates all efforts aimed at diversifying the economy through the development of globally competitive enterprises to enable growth and meaningful contribution of different sectors of the economy.

CONTACTS: Tel: +267 3601200

Website: www.miti.gov.bw

PARASTATALS

Companies Intellectual Property Authority (CIPA)

Head Office

Plot 54358, Prime Plaza, CBD
Gaborone

Tel: +267 3673700

Fax: +267 3188130

www.cipa.co.bw

Local Enterprise Authority (LEA)

Head Office

Fairgrounds Office Park Lot 50676
Gaborone

Tel: +267 3644000

Fax: +267 3644001

www.lea.co.bw

Citizen Entrepreneurial Development Agency (CEDA)

Head Office

Four Thirty Square, Plot 54350, PG Matante Road
Gaborone

Tel: +267 3170895

Fax: +267 3190001

www.ceda.co.bw

Botswana Bureau of Standards (BOBS)

Head Office

Plot 55745, Airport Road, Block 8
Gaborone

Tel: +267 3903200

Fax: +267 3903120

www.bobstandards.bw

Competition Authority (CA)

Head Office

Plot 28, Matsitama Road. Main Mall
Gaborone

Tel: +267 3934278

Fax: +267 3121013

www.competitionauthority.co.bw

Gambling Authority (GA)

Head Office

Fairgrounds Office Park, West Wing
Gaborone

Tel: +267 3957672

Fax: +267 3182585

www.gamblingauthority.co.bw

Botswana Development Corporation (BDC)

Head Office

Fairscape Precinct, Plot 70667, The Tower
Fairgrounds
Gaborone

Tel: +267 3651300

Fax: +267 3903114

www.bdc.bw

Special Economic Zones Authority (SEZA)

Head Office

Fairscape Precinct, Plot 70667, The Tower
Fairgrounds
Gaborone

Tel: +267 3708302

Fax: +267 3166952

www.seza.co.bw

BANKS AND OTHER FINANCIAL INSTITUTIONS

Central Bank

Bank of Botswana

Private Bag 154
Gaborone

Tel: +267 3606000

Website: www.bankofbotswana.bw

Commercial Banks

African Banking Corporation of Botswana Limited

Private Bag 00303
Gaborone

Tel: +267 3674324

Website: www.bancabc.co.bw

Bank Gaborone Limited

Private Bag 00325
Gaborone

Tel: +267 3671567

Website: www.bankgaborone.co.bw

Bank of Baroda (Botswana) Limited

P O Box 21559, Bontleng
Gaborone

Tel: +267 3992710

Website: www.bankofbaroda.co.bw

Bank of India (Botswana) Limited

Private Bag 00111
Gaborone

Tel: +267 3928506

ABSA Bank Botswana Limited

P O Box 478
Gaborone

Tel: +267 3914521

Website: www.absa.co.bw

First Capital Bank Limited

P O Box 5548
Gaborone

Tel: +267 3907801

Website: www.firstcapitalbank.co.bw

First National Bank of Botswana Limited

P O Box 1552
Gaborone

Tel: +267 3706000

Website: www.fnbbotswana.co.bw

Stanbic Bank Botswana Limited

Private Bag 00168
Gaborone

Tel: +267 3901600

Website: www.stanbicbank.co.bw

Standard Chartered Bank Botswana Limited

PO Box 496
Gaborone

Tel: +267 3601500

Website: www.sc.com/bw

Bank SBI Botswana Limited

P O Box 505243
Gaborone

Tel: +267 3905039

BUSINESS MEMBER ORGANIZATIONS

Business Botswana

Head Office

Luthili Road

Gaborone

Tel: +267 3953459

Fax: +267 3973142

Email: publicrelations@bb.org.bw

Website: www.bb.org.bw

Botswana Exporters and Manufacturers Association

Head Office

Plot 110, Independence Road

Tel: +267 3911883

Fax: +267 3911001

Email: bema@bema.co.bw

Website: www.bema.co.bw

Botswana Chamber of Mines

Head Office

Plot 165, Pilane Road

Gaborone

Tel: +267 3914685

Fax: +267 3914684

Email: bcm@info.bw

Website: www.bcm.org.bw

Botswana Horticultural Council

Main Office

Gaborone

Gaborone

Tel: +267 3689360

Fax: +267 3907057

Email: info@bohoco.org

Website: www.bohoco.org

11

**MANUFACTURERS
LISTING**



Manufacturing

Company Name	Products	City	Tel	Email
O3 Beverages	O3 bottled water & carbonated soft drinks	Gaborone	3180800	kagiso@o3beverages.com
3 Bulls Foods	Manufacturing Meat Balls	Gaborone	3939429	rretautonaamos@gmail.com
89 Caratstreet	Diamond cutting and polishing	Selibe Phikwe	73098768	89caratstreet@gmail.com
Aandee Engineering (Pty) Ltd..	Manufacture, repair, supply of overhead cranes & lifting equipment	Tlokweng	3974853	kobust@mega.bw
Actfit	Aluminium window and door frames	Gaborone	3190263	actfit@mega.bw
Afro Link Fishiries	Fish processing	Gaborone	75957598/74541621	rabmason@outlook.com
Afro Muse	Handcrafted Leather Products	Gaborone	71832142/75756638	afromusestudio@gmail.com
Air Liquide Botswana (Pty) Ltd..	Manufacturing gas	Gaborone	3912988	edith.essau@airliquid.com
Airfresh Alpha Holdings (Pty) Ltd..	Scented products	Gaborone	74550384/74340537	alovvengonga@gmail.com
Ali Boats	Boats	Maun	6860201	admin@aliboats.co.za
Aliabi Holdings Pty Ltd	Redined Sorghum meal	Molepolole	73458925	
Amigear Ventures (Pty) Ltd..	Poultry Farm/packaging	Gaborone	3160500	smafale@notwanepoultry.co.bw
Apache Roof Tiles (Pty) Ltd.	Manufacturing-Roof Tiles	Gaborone	3902306	info@apache.co.bw
Arona Natural Foods	Cold pressed virgin sunflower cooking oil	Gaborone	3182626	fannie@fmg.co.bw
B & M Garments	Textiles/ apparels	Lot 26 Shashe	2484205	Krishna@bnmgarm.co.bw
Babic Holdings/Northern Fixtures	Stationary, both office and scholastic equipment	Gaborone	3708114	tebogo@nfb.co.bw
Babirwa Concrete Products	Stock bricks, blocks, paving, slabs	Gaborone	3930046	mosedameok@yahoo.com
Beautiful Us Africa Group (Pty)	Manufacture Hair products	Gaborone	75215491	wada.busani@gmail.com
Best Source (Pty) Ltd.	Manufacturing-Bottled Water	Gaborone	3191092	gaborone@oasiswater.co.bw
Bi Manufactures (Pty) Ltd.	Waste Recycling company	Gaborone	7710944	sadiq@live.co.za
Bio-Flash Investments	Concrete products, kerbstones, paving bricks, paving slabs, blocks 4½ and six inch	Maun	6861000	butmokobela@yahoo.com
Blue Crystal Botswana	Sugar Manufacturing	Lobatse	533-3020	info@sugar.bw'
Blue Marline Holdings	Aluminium cookwares - pots & pans	Gaborone	3161143	galaxypots@botsnet.bw
Bms Foods Botswana (Pty) Ltd..	Food	Gaborone	76636065	sheldonm@bmsfoodsbotswana.co.bw

Manufacturing

Company Name	Products	City	Tel	Email
Bokomo Botswana (Pty) Ltd.	White Star super maize meal, Bokomo flour, Pure Sugar	Gaborone	3939218	pvanwyk@pioneerfoods.co.za
Bolux Group (Pty) Ltd..	Maize meal, Flour and Pasta	Ramotswa	5390275	colinm@bolux.bw
Botash	Soda ash, corse and fine salt, chemical salt	Ramotswa	6214321	ohule@botash.bw
Botswana Cap And Lobatse Canvas	Canvas bags, tents	Lobatse	5330298	wouter@lobatsecanvas.com
Botswana Meat Commission	Frozen meat, Canned beef and beef by products	Lobatse	5331232	tgmodise@bmc.bw
Brendon Golden Investment	produce Jam	Molepolole	5906125/77161885	jbmotlalekgosi@ymail.com
Brick Build (Pty) Ltd..	Manufacturing bricks	Francistown	2442107/08	andre@panda.co.bw
Brick Corp (Pty) Ltd..	Bricks, pavers, blocks	Gaborone	3133604	Indaba@foamex.co.bw
Buche Buche Pottery	Flower pots, traditional pots, plates, vases, teapots, dinner plates, sculptures	kazungula	6252481	buche.buche.pottery@gmail.com
Caps And Helmet/Lobatse Canvas	Military gear and canvas equipment	Lobatse	5330 298	makobocancaps@btcmil.co.bw
Casik Investments (Pty) Ltd..	Door frames and Window frames	Francistown	2412980/1	sorriso@inet.co.bw
Chemdol (Pty) Ltd..	Dishwashers, Laundry Powder and Disinfectants using Various Chemicals	Gaborone	3919565	chemdol@info.bw
Chloride Exide Botswana (Pty) Ltd.	Automotive Batteries	Gaborone	3959990	solly@chloride.co.bw
Classic Modern Vintage	Produce Vintage Furniture	Gaborone	74498692/75521455	karabo.modisaotsile@yahoo.com
Clover Chemicals	Detergents and Disinfectants	Gaborone	39530335	khofi.gabosekwe@cloverindustries.co.bw
Creations Of Africa (Pty) Ltd..	Manufacturing, screen printing & embroidery	Gaborone	3500402/3	merasmus@info.bw
Dinnys Leather Work And Leather Crafts	Manufacture Leather items	Palapye	72573626/77048188	dineogobatilwe@gmail
Divine Morula	Morula products	Gaborone	73112990	
Dobi Foods	packaging traditional food	Gaborone	71576145/73901207	dobifoods@yahoo.com
Dream Flavours/White Angels	Manufacturing Yogurt,-madila,juice	Gaborone	5920958/72107300	whitebwangels@yahoo.com
Dulux Botswana (Pty) Ltd..	Manufactruing paint	Gaborone	3951011	wmurambiwa@dulux-botswana.co.bw
Eagle Medical Industries (Pty) Ltd..	Personal Protective Equipment	Gaborone	+267 3936892	info@emibw.com
Elite Club Processing (Pty) Ltd.	Manufacture cleaning chemicals	Gaborone	5729510	info@eliteclubprocessing.com
Esdak Detergent Products	Cleaning Products	Maunatlala	74102169	esdakdetergents@gmail.com
Exclusive Chem (Pty) Ltd..	Sanitizers	Gaborone	73193355	
F&G Botswana (Pty) Ltd..	Flavor and Fragrance	Francistown	2416587	fng@hbglobal.com

Manufacturing

Company Name	Products	City	Tel	Email
Flo-Tek Pipes & Irrigation	PVC pipes, HDPE pipes & water storage tanks	Lobatse	5332180	jinu@flotek.co.bw
Foods Botswana	Tsabolthe cereal meal, Instant Pre-cooked fortified maize soya, sorghum meal porridge, maize meal, samp & malt	Gaborone	3911074	lab@foodsbswana.co.bw
Fro Gals	natural Hair products	Gaborone	77003956/72931405	goabaonedinama@gmail.com
Fsg Manufacturing	Caskets	Gaborone	3696200	hudsonm@fsg.co.bw
Funeral Services Group Fsg	Manufactruing caskets	Gaborone	3922317	katlegog@fsg.co.bw
Gabs Bedding	Mattresses, base sets, lounge suites, cut foam, kitchen sponges	Gaborone	3906476	ray@rma.co.bw
General Packaging Industries	Corrugated boxes, plastic bags, shrink film, stretch film & packaging accessories	Gaborone	3912908	ravi@genpakbotswana.com
Genesis Innovations (Pty) Ltd.	Manufacture of Leather Products	Gaborone		porshcreations@gmail.com
Goldem Maths (Pty) Ltd.	Food Processing	Moshupa	72124252/74223115	malebogok78@gmail.com
Golden Fruit (Pty) Ltd..	Fruit Juice	Ramotswa	5391826	bluwe@goldenfruit.co.bw
Gopesha (Pty) Ltd..	Steel kitchen units, catering tables & steel trunks, steel furniture	Gaborone	3165397	louis@gopesha.co.bw
Grafrucets	lerotse Jam, Morula Juice, Legapu Juice	Gaborone	72409433	grafrucets@gmail.com
Grand Salts And Sauces	Seasoning salts	Tlokweg	71405288	
Grandbrand Investments(P-ty) Ltd	Water purification by Reverse Osmosis Process and sterilisation through UV Light and Ozonization.	Gaborone	3911787	AshrafLambe@gmail.com
H2O Internationa Botswana	Manufacturing-Bottled Water	Gaborone	3111508	botswana@h2o.co.za
Impulse Energy	bottled water	Gaborone	71688013	patrick@impulseenergy.co.bw
Javeria Garments (Pty) Ltd..	Manufacturing paint	Gaborone	3935041/71221827	javeria@opqnet.net
Jewel Paper Products	Paper products	Gaborone	71301349/73002082	krishma@jewel.co.bw
Just Ginger (Pty) Ltd.	Manufacturing ginger beer	Gaborone		info@justgingerbers.com
Kalahari Chocolates	Manufacture Variety of Chocolates	Gaborone	3117327/75333449	info@kalaharichocolate.co.bw
Kalahari Floor Tiles	Vinyl Floor Tiles	Gaborone	3914375	gdihutso@kalaharifloor.co.bw
Kalahari Kanvas Co. (Pty) Ltd..	tents, truck covers, tarpaulins, bakkie covers, blanket lined ponchos, full upholstery service	Maun	6860568	kalkanvas@botsnet.bw
Kemtek (Pty) Ltd..	Skin care products, Hair care and Perfumes	Francistown	2413584	jbvenkatesh@kemtek.net
Keren Happuch	Perfumery	Gaborone	4600829/74835211	info@kerenhappuch.co.bw
Kgalagadi Plastics Industries (Pty) Ltd..	Manufacturing plastics	Gaborone	3914182	sales@kpiplastics.com
Kgalagadi Soap Industries	Multipurpose bar soap	Gaborone	71321434	tim@ksi.co.bw
Kgetsi Ya Tsie (Pty) Ltd..	Multi-usable oil, soap and jam from the morula fruit	Lerala	4954463	mercymmpi@yahoo.com

Manufacturing

Company Name	Products	City	Tel	Email
Kgk Diamonds Botswana Pty Ltd.	Diamond Cutting and processing	Gaborone	3112830	accounts@kgkbw.com
Khokho B. Holdings	Roasted Peanuts	Gaborone	71 526 145	
Krabs And Scabo Outfitters	Furniture using Tyres	Gaborone	73226565/74261690	curverseletlo@gmail.com
Kwena Concrete Products (Pty) Ltd.	Manufacture of Concrete Products	Gaborone	3922350/39222840	bkenosi@info.bw
Kwena Rocla (Pty) Ltd..	Concrete and Pre-cast Cement Products	Gaborone	3 904 032	mbuya@kwenarocla.com
Laedy P Organics	Beauty and Cosmetics products	Gaborone	74224004	mogomeportia@yahoo.com
Lamport Water	Water Bottling	Tsabong	71727345	
Lebang Setso	Leather Bags and products	Gaborone	3105330	lebangsetso@yahoo.com
Lesedi Boards (Pty) Ltd..	Electrical ditribution boards, metering kiosk, street lighting kiosk, feeder pillar	Gaborone	3973387	lesedi@sharps.co.bw
Leseding Interiors (Pty) Ltd.	Aluminum Doors, windows, skylights,	Gaborone	72100282	
Letsatsi Renewable Energy	Manufacturing -LED lights	Gaborone	3 939 661	rashmcp@yahoo.com
Lithoflex	Paints	Gaborone	3935340	bantsipelo@yahoo.com
Mabeo Furniture	Furniture Manufacturing	Gaborone	3908736	peter@mabeofurniture.com
Maneblocks Holding (Pty) Ltd..	Sorghum meal and bran	Tsetsebjwe	2646448	modisejeremiah@yahoo.com
Matsiloje Portland Cement	Cement	Matsiloje	2483029	mjosh@nortex.co.bw
Maungo Craft	gourmet Jam	Gaborone	71640600	maungocraft@gmail.com
Medupe Entertainment Services	Traditional Troupe	Gaborone	76768885	medentertainment@gmail.com
Mega Brick	Cement bricks and blocks	Gaborone	3952524	megabrick15@gmail.com
Mmoni Chakalaka	Food/Chakalaka	Gaborone	75773648/73960303	msekao16@gmail.com
Monate Wa Temo Milling	Manufacturing sourgum meal	Molepolole	73458925	akoogile@gmail.com
Moringa Technology Industry (Pty) Ltd..	Moringa powder, tea, capsules and pellets	Gaborone	71302355/76666661	moringabw@yahoo.com
Motlopi Beverages	Coffee	Kolonkwaneng	73493214	
Multi Equipment Supplies & Services	Food packaging & distribution	Ramotswa	3938389	lerunne2@gmail.com
Naga Earth	Bath and Body cosmetics	Gaborone	75294416/74587118	nagaeearthsoap@gmail.com
Nata Timber Industries	Manufacturers & suppliers of roof trusses, furniture boards, doors, windows	Gaborone	3924406	
natatimbersbots@gmail.com				
Native Foods	manufacturing mosuku-jane tea	Gaborone	71916739	zulugokatweng@gmail.com
Natureal Jewellery Designs	Jewellery	Jwaneng	74004683	naturealbots@gmail.com
Nockridge Holdings (Pty) Ltd.	Manufacturing -Salt	Gaborone	71672496	nockridgeholdingsinfo@gmail.com

Manufacturing

Company Name	Products	City	Tel	Email
Nubian Seeds (Pty) Ltd.	Manufacturing essential oils, soap	Gaborone	3133811	tduetsotkt@gmail.com
O3 Beverages	Water	Gaborone	3180800	jinu@flotek.co.bw
Openpalm (Pty) Ltd.	Hospital Consumables	Gaborone	72956093	olefilekm200@gmail.com
Organic Fertilizer Manufacturing	Fertilizer	Gaborone	3939368/ 76065264	organicfmb@gmail.com
Organic Natural Skincare Solutions	Skincare Products	Gaborone	77878171/76003420	dlmoreki@gmail.com
Oxygen Gas	Medical gas	Francistown	71301715/240 1062	info@oxygas.co.bw
P.G. Timbers	Timber trusses & doors	Gaborone	3922992	asogann@pgtim.bw
Panda	Bricks, pavers, kerbs & stones	Francistown	2442107	jackson@panda.co.bw
Peanasco Investments	Peanut Butter	Gaborone	76495913/75701037	N/A
Phaka Investments (Pty) Ltd..	Canvas Wear	Maun	6862779	canvaszone@dynabyte.bw
Phazha Facility Management (Pty) Ltd.	Steel & fibre glass canopies, rollbars, bushbars, cattle rails, trailers and any fabrication works	Gaborone	3906134	flexicanopy7@gmail.com
Pheju Investments(Pty) Ltd.	Roofing sheet	Mogoditshane		
Pipe Maker Botswana	pipes	Gaborone	3910121	meezimran@hotmail.com
Pipex Plastics Botswana (Pty) Ltd..	Manufacturing water pipe	Gaborone	3913685	theo.pipex@info.bw
Positive Solutions	Manufacturer of plastic furniture & beverage crates	Gaborone	3901816	daleep@positive.co.bw
Potfid Furniture Manufacturing	Office, home, industrial & institutional furniture, wardrobes & kitchen fittings	Gaborone		potfidfurniture@gmail.com
Power Engineering	Low Voltage and High Voltage cables, PVC, XLPE, PE Armoured and Unarmoured	Gaborone	3912611	tr.naik@panafrica.co.bw
Power Serve (Pty) Ltd..	Boats	Maun	6860201	admin@aliboats.co.za
Ppc Cement	Cement (BotCem, Super-Build, DPC)	Gaborone	3901553	wdebeer@ppc.co.bw
Pro-Tm	Cleaning detergents	Gaborone	72731915/74522609	mokopothembi@gmail.com
Pyramid Holdings (Pty) Ltd..	Paper bags & sacks	Gaborone	3973593	carlh@pyramid-holdings.com
Radstone (Pty) Ltd.	Concrete Roof tiles	Gaborone	391 5003/	radsstone@tocotex.com
Real Biltong	Produce Biltong	Gaborone	74920085/77174018	gtmakuku@hotmail.com
Real Sugar/Gwandu Group	manufacture Sugar	Maun	6840722/74638416	laonemonageng@gmail.com

Manufacturing

Company Name	Products	City	Tel	Email
Repsol (Pty) Ltd.. T/A Office Depot	Manufacturing of office desking and corporate seating	Tlokweng	3500546	mdshankar@hotmail.com
Rising Sun (Pty) Ltd..	Denim jeans	Gaborone	3182939	shafiek@risingsunbw.com
Routeasy (Pty) Ltd..	Manufacture, processing & packaging of pre-cooked food	kasane	6252233	mike.royalsspot@gmail.com
Royal Technologies (Pty) Ltd..	Water treatment chemicals, mining chemicals, lab reagents & consumables & agriculture equipment	Gaborone	3922346	info@royaltech.co.bw
Royals Spot (Pty) Ltd..	Bee, honey, wax, cosmetics & out-grower hub	kasane	6252233	mike.royalsspot@gmail.com
Salesa Equipmemnts	Chemicals, cleaning equipments	Gaborone	73045663	obimolobi@gmail.com
Samco (Pty) Ltd..	Office furniture & interiors	Gaborone		samco@botsnet.bw
Sdm Holdings	electrical switchboards	Gaborone	3186080	sdm@sdm.co.bw
Seaty Park Investments (Pty) Ltd..	Manufacturers of biscuits and bread Markets Supplied	Gaborone	3926769	johnson@nutribake.co.bw
Sedi Skin Care	Body Cosmetics	Gaborone	71709009	sediskincare@gmail.com
Senn Foods (Pty) Ltd..	Manufacturing process meat	Gaborone	3925103/3928637	vl@bh.co.bw
Setso	Canned serobe	Gaborone	73259526	N/A
Shedol Fragrances	Cosmetic & Fragrances	Gaborone	75680234/75216218	kgomotsotwagirayezu@gmail.com
Silver Investments T/A Earth Vitamins	Biltong	Gaborone	72300018/74491088	thabo@earthvitamins.co.bw
Siwifa	corrugated iron	Tlokweng	76949274	keamamona@gmail.com
Sleek Foods	relishes	Gaborone	74243333	nobantusk@gmail.com
Smetchar Foods (Pty) Ltd.	Packges Chillies	Gaborone	72456607	sethomo@rocketmail.com
Soft Gold (Pty) Ltd..	Human and plastic Hair pieces	Gaborone		accounts.bw@softgold.co.za
Sound Investment (Pty) Ltd..	Steel Products	Gaborone	5729076	soundinvestments@yahoo.com
Strict Investments (Pty) Ltd..	Salt	Francistown	2417629	bogamandandi@yahoo.com
Sunita Cables	PVC insulated electric cables, PVC & XLPE insulated armoured cables, aluminum & copper conductors	Gaborone	3915922	sunitacables@btcmil.co.bw
Sweet Sensations	Manufacture Chocolates	Gaborone	71218096	sebumokgwe@icloud.com
T & T Industries (Botswana) (Pty) Ltd..	tents, tarpaulin, water pipes, assorted canvas	Gaborone	3912571	t&t@nfo.bw
Target Meat (Pty) Ltd..	Beef by- Products/ Meat products Being Russians and Chili Bites	Lobatse	5330928	moffatmbaakanyi@gmail.com
Task Collection Centre	Linen, bedding, curtains, protective clothing, uniforms & german print	Palapye	4900400	taskmanu@yahoo.com
Techno Feeds	Manufacture of Pet food	Gaborone	3167238	felicityhunterbotswana@yahoo.com
Temo Boswa Milling	Food	Gaborone	73231762	mphothatoorapeleng@rocketmail.com

Manufacturing

Company Name	Products	City	Tel	Email
Terry Cooney (Pty) Ltd..	Office & school, library furniture & upgraded boards and hardwood timber	Gaborone	3930254	faizal@terrycooney.co.bw
The Bulb World	Bulb Manufacturing	Selibe Phikwe		jacob@thebulb.co.bw
The Foundation Design	Canvas BAGS,	Mochudi	72818140/71689990	flouzandesigncan@gmail.com
Theilliest Investment (Pty) Ltd	Jam, Juice using Motoroko	Gaborone	71715360	zmguni@gmail.com
Think Plam T/A Motswedi Oil (Pty) Ltd.	Manufacturing oil	Gaborone	72772315	thinkpalm2017@gmail.com
Thobo-Orion Products (Pty) Ltd..	Peanut butter	Gaborone	3191850	thobo@work.co.bw
Tlhomeso Timbers (Pty) Ltd..	Timber production	Gaborone	391 5003/3185318	tlhomeso@tocotex.com
Tom (Pty) Ltd..	Sorghum meal	Mochudi	5748515	tomptyltd@btcmil.co.bw
Tsina Tota	Honey	Gaborone	71112559	tsinatota@gmail.com
Twinco Enterprises (Pty) Ltd..	Frieght services	Gaborone	3933164	bliumaster@btcmil.co.bw
Vijaykumar Bhatt	Plastic Containers	Gaborone	71259284	audrakshptyltd@yahoo.com
Whistler Beverages	Water	Gaborone	71991010	chadam@whistler.co.bw
White Angels	Yoghurt, juice, icepops, madila	Molepolole	5920958	whiteangels@yahoo.com
Wiggly Wag Services	Pet foods	Gaborone	71346359/77662008	wigglywagservices@gmail.com
Wild Fruits Of Africa	Marula products	Gaborone	3957400	info@wildfruitsof africa.com
Zila Investments (Pty) Ltd	Quality household, industrial and automotive cleaning chemicals.	Francistown	2420267	rebo.hick@zilainvestments.com

Agriculture and Agro-processing

Company Name	Products	City	Tel	Email
Agric Fountain (Pty) Ltd..	Grain, farm inputs, packaging	Gaborone	3906775	lmakubate@agricfountain.co.bw
	Bulb Manufacturing	Selibe Phikwe		jacob@thebulb.co.bw
Botswana Agricultural Marketing Board	Marketing Agency for locally grown crops	Gaborone	3951341	communications@bamb.co.bw
Chabana Farms	Processing and Packaging of produce	Francistown	71211629	contact@chabanafarms.com
Crosscorn (Pty) Ltd.	Agriculture	Gaborone	3960758/9	tebogo@crosscorn.co.bw
Nojubo Food Packaging	Packaging cereals and Legumes	Selibe Phikwe	75541104	mbupelo-moroka@lea.co.bw
Nutri Feeds Botswana	Pig & broiler feeds	Mochudi	5728375	awie@nutribots.co.bw
Onias Farms	Vegetable and Friut Packaging	Gaborone	71268600/73946234	oniasfarms@gmail.com
Ontefetse Farmers	Poultry Farm/packaging	Jwaneng	71963682	ontefetselesh@mail.com
Senela Creative	Vegetable and Friut Packaging	Jwaneng	5887054/72155329	senela@gmail.com

Automotive

Company Name	Products	City	Tel	Email
Silver Horizons	Farm Produce	Gantsi	72610480	silverhorizonsghanzi@gmail.com
Spintex Spinning Mills	Acrylic Fiber Yarn	Francistown	2413816	botex@botsnet.bw
Tswana Pride	packages fire wood	Gaborone	76095498	tswanapridefirewood@gmail.com
Viva Organica	Agriculture	Gaborone	71714259/75040880	vivaorganicabw@gmail.com
Global Lubricants (Pty) Ltd..	Lubricants	Francistown	2414467	saiyazsarder@hotmail.com
Kromberg & Schubert Botswana (Pty) Ltd.	Vehicle ignition wire setsparts	Gaborone	3631110	seand@ksrb.kroschu.com
Pasdec	Electrical wiring harnesses	Lobatse	27824151061	kpather@pasdec.co.za

Applied Information Technology

Company Name	Products	City	Tel	Email
3I Group	ICT Services	Gaborone	73214620	Maduo@3igroup.co.bw
Aafroagilesoft	Website Design	Gaborone	73768835	
Afro Agile Soft	Digital Marketing	Gaborone	73768835/72497865	marketing@afroagilesoft.com
Avocado Designs	IT Consultancy	Gaborone		
Axis Tech	ICT	Gaborone	3101353/74712201	tumi@axistech.co.bw
Brastorne (Pty) Ltd..	ICT	Gaborone	3114683	martin@brastorne.com
Ditec Mobile (Pty) Ltd.	Mobile phones, computer software and hardware	Gaborone	73451009/73311271	sales@ditecmobile.com
E Drive Technology Botswana	Fleet Tracking	Gaborone	3911778/76478929	info@edtbswana.co.bw
Foxcroft Holdings	Develop Mobile App	Gaborone	725551141	clarrisa@kwibi.co.bw
Frokane Investment (Pty) Ltd.	Supplier of ICT products	Gaborone	3938825/74200558	frokaneinvestments@gmail.com
Ideal Technologies	ICT services	Gaborone	3935766	raditedul@hotmail.com
Informatix Industry Services	Computer software development & support	Gaborone	3908997	tebok@gmail.com
Insight Promotions	IT and Online Marketing	Gaborone		kellytey4@gmail.com
Radio Tech Solutions (Pty) Ltd.	Radio Solutions	Gaborone	3923054/72583637/74644081	ulopang@radiotech.co.bw
Skymartbw	E-Commerce	Gaborone	3113800	info@skymart.co.bw
The Refec Group/Avocado Designs	IT and Online Marketing	Tlokweng	3115868/71565414	jahngada@gmail.com

Educational Skills Development

Company Name	Products	City	Tel	Email
ABM	Collge of Education	Gaborone	3956887	info@abm.ac.bw
Francistown College Of Programming (Pty) Ltd.	College of Education	Francistown	72813243	g.majaga@gmail.com
Mohe (Pty) Ltd..	Training services in health & safety, medicinal and cut flower plants growing & processing	Tlokwen	319 0591	mohts12@yahoo.com
My School Identity Magazine	Media-Magazine	Gaborone	72196945	myschoolidbw@gmail.com
Re A Bua-Setswana Academy	Educational Services	Gaborone	77963642	admin@smartchalk.co.bw
Sign Lauguage Skill Development	Educational Services	Gaborone	3185073/73173134	office@slangintsign.co.bw
Society Of Road Safety Ambassadors	Road Safety campaigns	Gaborone	71852892	sorsa.ub@gmail.com
Society Of The Deaf	Deaf School	Ramotswa	3188374/71895888	gontshwanetseg@yahoo.com

Energy

Company Name	Products	City	Tel	Email
Boswa Energy	Petroleum products	Gaborone	3980468/75111261	tsealetsa@boswaenergy.co.bw
Botswana Power Corporation	Power/Electricity Utility	Gaborone	3603000	raleruj@bpc.bw
Kgalagadi Resources Development Company (Pty) Ltd.	Manufacture of solar products	Gaborone	3912915	jrj@solarpower.bw
Lfi Electricals	Electrical Contractor	Gaborone	75117849/73457216	mrlebone@hotmail.com
Megamoon (Pty) Ltd.	Petroleum products	Gaborone	73292947	senyadio@stolpetroleum.com.
Solar Power	Solar panels, electricity generation	Gaborone	3912915	solarpower@solarpower.bw
Solaromatics Botswana (Pty) Ltd.	Solar Water heaters and Photovoltaic system	Francistown	2417836	mercymmpi@yahoo.com
	Deaf School	Ramotswa	3188374/71895888	gontshwanetseg@yahoo.com
Tswana Fuel	Gasolyn Products	Gaborone	3182539	ubuka.tswanafuel@lsb.co.bw

Automotive

Company Name	Products	City	Tel	Email
Ac Power Designer	Engineering	Ramotswa	72423978	Maduo@3igroup.co.bw
dagisanyang@yahoo.com	Website Design	Gaborone	73768835	
Acree (Pty) Ltd..	Engineering	Gaborone	319098	
Amo Nozzie Dee Investment	supplying and installing Blinds	Gaborone	5729146/71474379	gsbu78@gmail.com
Asphalt Botswana	Road construction, road surfacing, road rehabilitation and infrastructure projects	Gaborone	3902418	rodody@asphalt.co.bw
Electro Mech Engineering Co. (Pty) Ltd..	Steel & timber furniture for home, office	Gaborone	3912990	dinesh@eme-furniture.com
Experience Count (Pty) Ltd..	Construction, electrical & mechanical	Gaborone	3937120	info@experiencecount.co.bw
	Develop Mobile App	Gaborone	725551141	clarrisa@kwibi.co.bw
First Projects	Infrastructure Dev Projects	Gaborone	74200558/73900156	keobametse@gmail.com
Kwa Nokeng Oil (Pearl Valley)	Manufacturing oil	Gaborone	3960286	phasiokwanokeng.com
Onias Industries	Wooden Door Crafting	Gaborone	71465521	jerryonias@gmail.com
Precision Concrete Works	Ready mix concrete	Gaborone	75583551	
Sharps Construction	Civil Engineers contractors	Gaborone	3952341	clauder@sharps.co.bw
Tekane Consultancy (Pty) Ltd..	Consultancy services	Oodi		tekanetekane@yahoo.com
Verity Electrical	Engineering services	Gaborone	76154115/72534482	ttaolo45@gmail.com
Window World	Engineering Services	Gaborone		dreamhousejoinery@gmail.com
Woodman Interiors	Interior Design	Selibe Phikwe	3981966	woodmaninteriors3@gmail.com
Xxx Fire Pro (Pty) Ltd..	Maintenance & service of fire equipment	Lobatse	5301621	fanichrisdikgang@yahoo.com

Financial and Business Services

Company Name	Products	City	Tel	Email
Alpha Direct	Insurance	Gaborone	3702749	pganeshrajah@alphadirect.co.bw
Barberry Enterprises (Pty) Ltd.	Financial Services	Gaborone	3925545	tomatofurniture@gmail.com
BECI	Trade credit insurance, performance bonds, debt collection, purchase order finance, invoice discounting	Gaborone	3188015	beci@beci.co.bw

Financial and Business Services

Company Name	Products	City	Tel	Email
African Centre For Surgical Innovation	Surgical Innovation	Gaborone	369 4397/ 76464287	wamemorapedi@gmail.com
Botswana Vaccine Institute	Manufacture & distribution of livestock vaccines	Gaborone	3912711	gmatlho@bvi.co.bw
Cardiac Clinic	Clinic	Gaborone	3710300	cardiacclinic.co.bw
Change For The Future T/A Cleaning Investments	Cleaning and Gardening Services	Gaborone	3114159/73830373	carelabcleaning@gmail.com
Commerce Hive (Pty) Ltd.	Manufacture of medical remedy solution Camoxsil	Gaborone	3938185	commercehive@gmail.com
Fragrans Perfumers Bw	Cosmetic & Fragrances	Gaborone	71471503	mswangu@gmail.com
Indus Healthcare	Healthcare Manufacturing	Gaborone	3908141	singh@induhelathcare.co.za
Lbk Physio Clinic	Clinic	Gaborone	3922707	kesolofetse@yahoo.com
Medical Devices Botswana	Medical Devices	Tlokweng	3116837	thato@mdb.co.bw
Medix Care	Hospital Consumables	Gaborone	3902730	medixcare@trumholdings.co.bw
Nhabe Pharmacy	Food	Gaborone	75500843	qac.botswana@gmail.com
Premium Health Investments (Pty) Ltd..	Wellness consultancy	Gaborone	395 3909/ 71600182	premiumhealth.co.bw
Sidilega Gaborone	Medical health services	Gaborone	76493828	info@sidilegaprivatehospital.co.bw
Simply Thyme	Waste Management	Gaborone	72853713	info@simplywaste.co.bw
Stocksure Holdings	Cleaning Services	Gaborone	3922707	babanyana@stocksureholdings.co.bw
Surreal Tech	Clinic	Gaborone	3923489	info@surrealtechbw.com
The Village Medical Centre	Medical Centre	Gaborone	3710300	kbhagat1964@gmail.com
Thrumark Chemicals	Cleaning Chemicals	Gaborone	3114555/	thrumarkchemicals@gmail.com
Tshedimosetso Trauma Training Academy Botswana	Paramedics, First Aid & Home Based Care Training Institute & medical equipment supply	Gaborone	3105834	gaboroneinfo@tttraining.co.za

Hospitality and Tourism

Company Name	Products	City	Tel	Email
24 Three Sixty 5 (Pty) Ltd.	Event Organising	Gaborone	72925816/3132858	independencefiesta@gmail.com
Adopt-A-Teen Youth Club	Youth Club	Gaborone	72929156	bafanakube@gmail.com
Aquarian Tide Hotel	Accommodation	Gaborone	3187480	shafiek@aquariantide.com
Big Foot Tours	Tour services	Gaborone	3953360/3910927	sheilla@bigfoottours.co.bw
Botswana Craft Marketing	Crafts exporter	Gaborone	3922487	sales@botswanacraft.bw
Bush Buddies	Tour services	Gaborone	74919802	info@bushbuddies.co.bw
Cresta Holdings	Hospitality services	Gaborone	3912222	md@cresta.co.bw
Cutikles (Pty) Ltd.	Nail Care	Gaborone	71827266	cutiklesnailspa@gmail.com
Double Seven Holdings T/A Gabs Experience	Travel arrangements	Gaborone	73564263	hegabsexperience@gmail.com
Explore Botswana 360	Tours	Gaborone	72215112	mmamotse@explorebotswana360.com

Hospitality and Tourism

Company Name	Products	City	Tel	Email
Lefatshe Canvas And Tents	Tented Accommodation	Gaborone	72747197/75972338	lefatshecanvas@gmail.com
Motse Lodge	Bed & catering - Lodge/ Cultural Village	Kanye	5480363	motselodge@botsnet.bw
Multi Talent Moving Theatre Org	Theatre	Gaborone	76795024	drylanderseng@gmail.com
Pro-Tm Washing Powder	Hotel amenities	Gaborone	74251055	mokopothembi@gmail.com
River View Villa	Catering Hotel	Francistown	2402067	jkhupe@hotmail.co.bw
Rosewell Chauffers	Hospitality & Tourism	Gaborone	3908292	suku@rosewellchauffeurs.co.bw
Shore Investments (Pty) Ltd.. T/A Travel Lodge	Accommodation	Gaborone	7173 7879/310 5000	reservations@travellodge.co.bw
Tjilenje--Tje Ngwao	Traditional Troupe	Francistown	71886060/71753458	tjilnjetjengwaobookings@ gmail.com
Travelodge	Hotel and Conference Centre	Gaborone	71447666	reservations@travelodge.co.bw
White Cat Group (Pty) Ltd.	Tour services	Gaborone	71215027	theomangoye@yahoo.com

Infrastructural Development

Company Name	Products	City	Tel	Email
Agna Ventures (Pty) Ltd.	Construction and energy efficiency improvement materials	Gaborone	3901391	lekobapsl@gmail.com
Ancient Jerico Park Apart- ments	Letting (Houses - Family)	Selibe Phikwe		thearkfarms@gmail.com
Cape Vail Investments (Pty) Ltd.	Real Estate Company	Gaborone	71490019	capeveilconference@gmail.com
E & H Construction	Infrastructure	Gaborone	3928392/71481126	cevans@excavator
Geo Mission Mining	Civil Construction Service	Gaborone	77020377	oleakae@yahoo.com
Project Magic (Pty) Ltd.	Building Construction	Gaborone	74200558/3923686	keobametse@gmail.com
Tiphneor Investment	Construction Services	Mopipi	77087559	tiphneorinvestment@gmail.com
Tosas Botswana (Pty) Ltd..	Building Roads	Gaborone	3914957	org.d@tosas.co.za
Uniprojects (Pty) Ltd..	Project management of construction & engineer- ing projects	Gaborone	3915418	uniprojects@uniprojectsafrica. com

Infrastructural Development

Company Name	Products	City	Tel	Email
Botswana Ash	Dense and light Soda Ash, coarse and fine Salt, chemical Salt	Francistown	6214321	ohule@botash.bw
Mendel Welding	Mining Services	Gaborone	3902198	thearkfarms@gmail.com
mendelworld@it.bw	Real Estate Company	Gaborone	71490019	capeveilconference@gmail.com
Minergy	Mining Services	Gaborone	71 23 79 36	leutlwetse@minergycoal.com
Tati Nickel Mining Company	Nickel & copper mining company	Tati	2410701	trapitsenyane@tatinickel.co.bw

12

About BITC



BOTSWANA INVESTMENT AND TRADE CENTRE

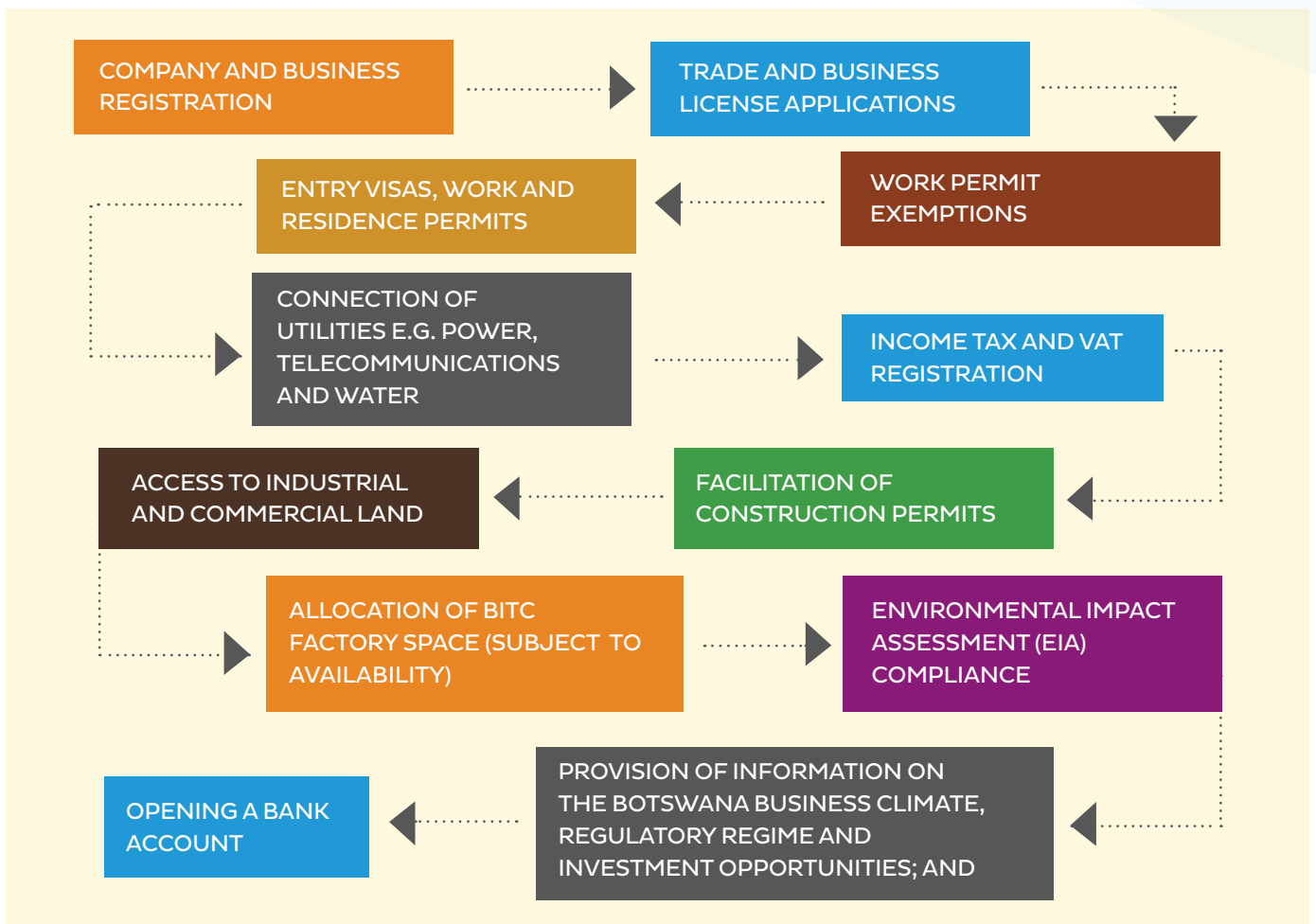


BOTSWANA INVESTMENT & TRADE CENTRE

The organization plays a critical role of driving Botswana's economic growth through attraction of Foreign Direct Investment (FDI), domestic investment, facilitation of expansions and further spearheads the growth of exports by promoting

locally manufactured goods to regional and international markets. BITC drives wealth creation for Botswana by creating platforms that will ensure increased citizen participation in the economy and create sustainable job opportunities.

Of great importance within the role of this organization is building and maintaining a positive and impressive image of our country locally and internationally. Through this encompassing mandate, BITC has committed to deliver on the following services, through the **Botswana One Stop Service Centre** housed at its head office in Gaborone to ensure the ease of doing business for all investors:



CONTACT INFORMATION:

BITC Head Office

Private Bag 00445,
Gaborone, Botswana
Plot 54.351, PG Matante Road Exponential
Building
Central Business District (CDB) Gaborone,
Botswana
T +267 363 3300
F +267 317 0452
Email: enquiries@bitc.co.bw

Francistown Office

Plot 903, Unit A14
Tati River Mall, Francistown
Tel: +267 363 3490
Fax: +267 317 0452
Email: enquiries@bitc.co.bw

United Kingdom Office

6 Stratford Place W1C 1AY
London
United Kingdom
T: +44 207 499 0031
F: +44 207 491 8528
Email: moemedi@bitcuk.co.uk

India

Botswana High Commission
C-9/3, Vasant Vihar
New Dehli -110057
T: +91 11 4633 7000
F: +91 11 4603 6191
Email: phiam@bitcin.co.in

South Africa

88 Stella Street
Sandton Mews-West Wing
Sandton
Johannesburg
T: +27 11 884 8959
F: +27 11 883 7798
Email: ratsebem@bitc.co.za



www.gobotswana.com



www.brandbotswana.co.bw



enquiries@bitc.co.bw



www.facebook.com/bitc



@Go_Botswana



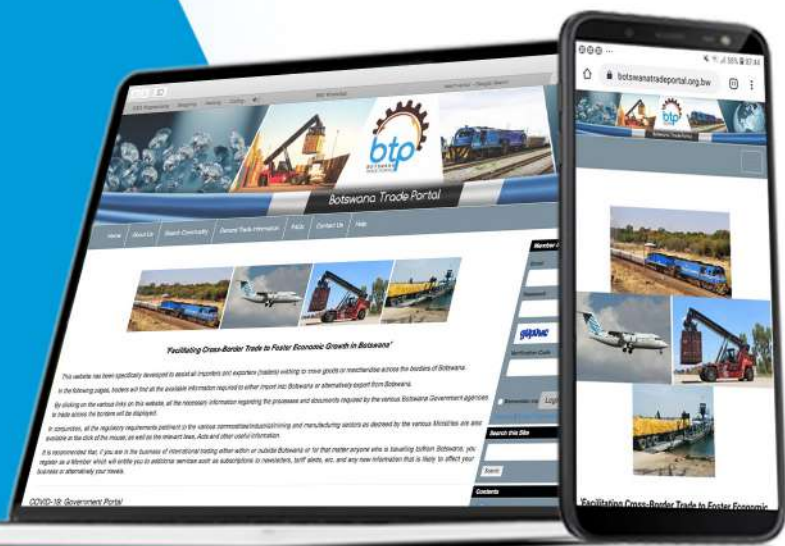
<https://www.linkedin.com/company/botswana-investment-and-trade-centre>



Reduce the spread of **Covid-19** and
**Embrace the new way of
doing business online.**

Log on to **www.botswanatradeportal.org.bw**
to access all the latest trade information.

Botswana Trade Portal, facilitating access to
trade information for the business community.
Together we can stop the spread of
the virus!



wear your mask



sanitize



social distance.

